

# iLLUMiGO™

ILLUMINATE TO COMMUNICATE



**THE COMPLETE  
SOLUTION**

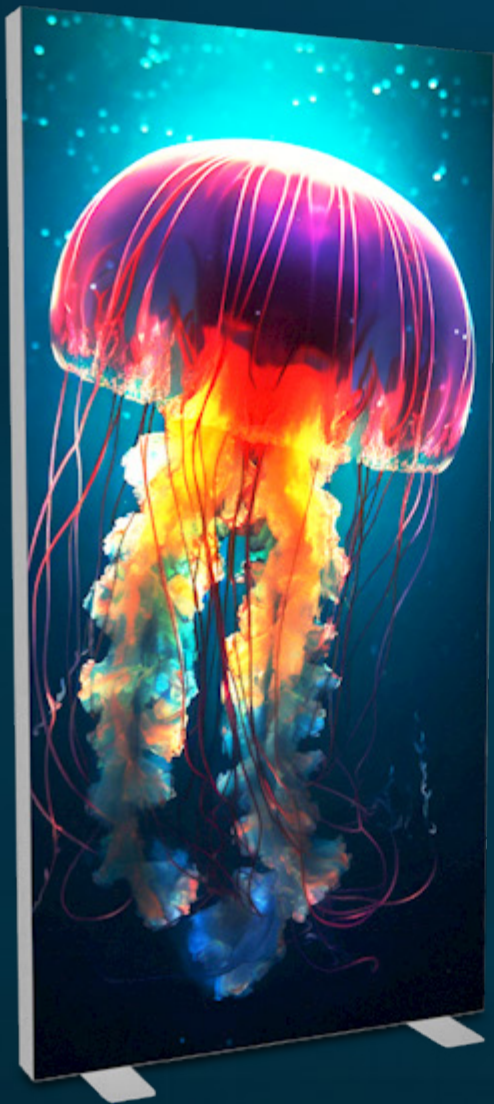
PRINT | PROMOTIONAL | DESIGN





# iLLUMiGO™

ILLUMINATE TO COMMUNICATE

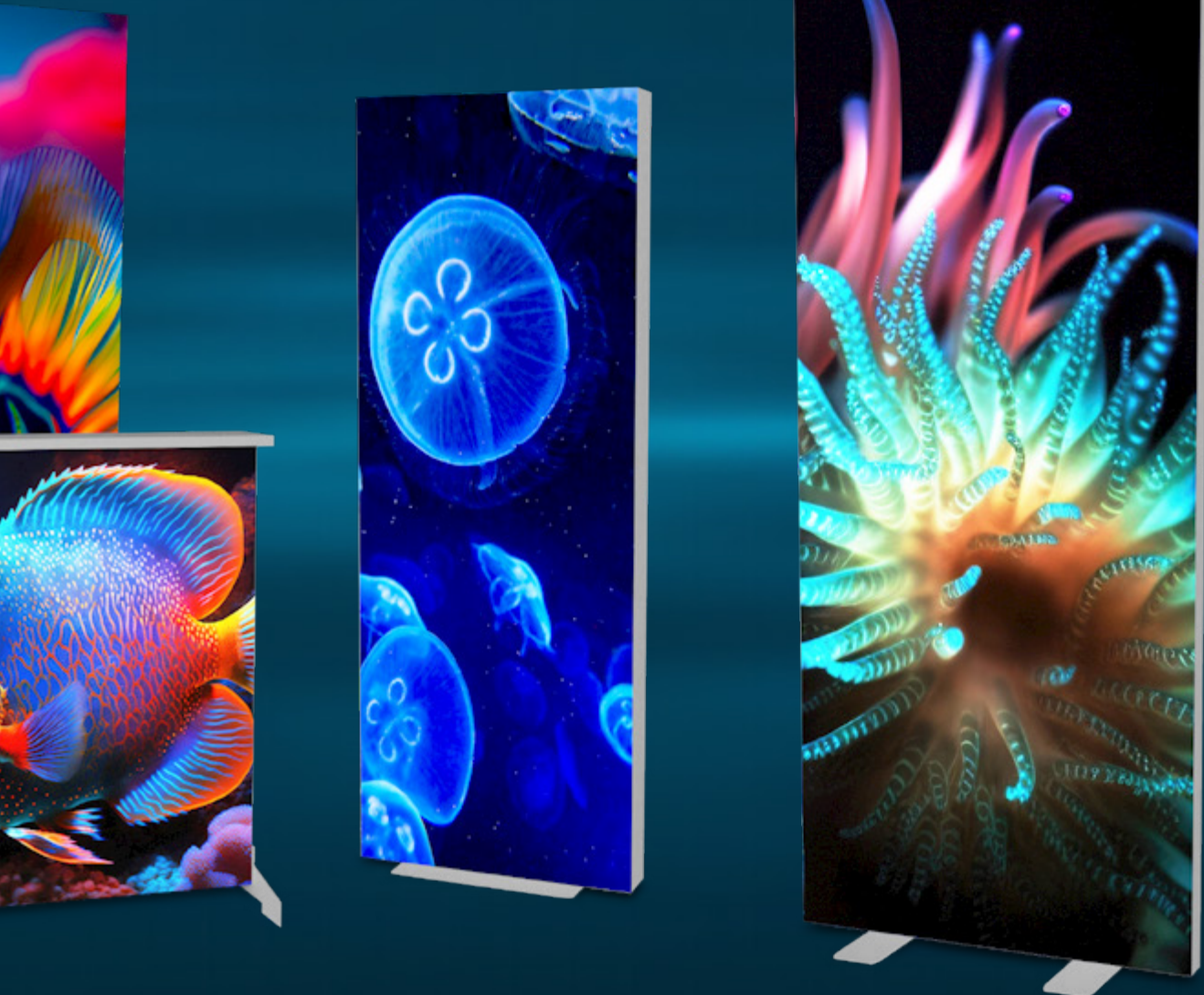


iLLUMiGO™

iLLUMiGO<sup>2x2</sup>™

iLLUM

Designed with elegance in mind, iLLUMiGO™ lightboxes are available in a range of styles and sizes to suit a variety of applications.



iGO™ LED COUNTER

iLLUMiGO™  
RETAIL

iLLUMiGO™ one



# iLLUMiGO™

ILLUMINATE TO COMMUNICATE

iLLUMiGO™ is an innovative portable LED lightbox system, with outstanding visual impact, making it suitable for a wide range of applications.

- Quick and easy to assemble with no tools required
- Clearly numbered sections ensure a simple step by step build
- Pre-assembled LED lighting, for hassle free “plug & play” installation
- Power cables insert discreetly under the frames for a flush finish
- Pre-fitted, twist and turn feet, for stability and rapid deployment
- Lightweight graphics (in SEG fabric or sustainable recycled media) slot easily into frame channels
- A portable system, supplied in a branded box with protective foam inserts and fabric storage tray
- Outstanding visual impact for a modern alternative to a roller banner



Powerful, bright, low voltage LEDs. Energy saving, and without overheating



Tool-free fast assembly, build and display in less than 10 minutes



Cost-effective, reusable system, for great return on investment



Store and transport in the protective box with carry handle



ILLUMINATE TO COMMUNICATE



# iLLUMiGO™

ILLUMINATE TO COMMUNICATE

The 2 x 1 m iLLUMiGO™ is a double-sided lightbox that delivers standout visual impact. From the flush-fitting backlit graphics to the sleek gloss white frame, this quick assembly system, offers a stylish and contemporary display unit.

<b>Material</b>	Aluminium
<b>Profile width</b>	100 mm
<b>Profile Colour</b>	White
<b>Assembly</b>	Tool-free
<b>Graphic area</b>	Double-sided
<b>Graphic attachment</b>	Silicone Edged Gasket 3 mm (SEG)
<b>Application</b>	Self-supporting with pivoting feet fixed to the structure
<b>Transport</b>	Protective box with carry handle

iLLumiGo™ - 2x1	⊗ 1000(w) x 2000(h) x 400(d) mm
iLLumigo™ bag	⊗ 460(w) x 1160(h) x 190(d) mm



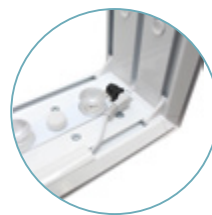
Branded protective box with carry handle



Supplied with twin twist-out feet



Numbered system for easy assembly



Pre-installed LED lights



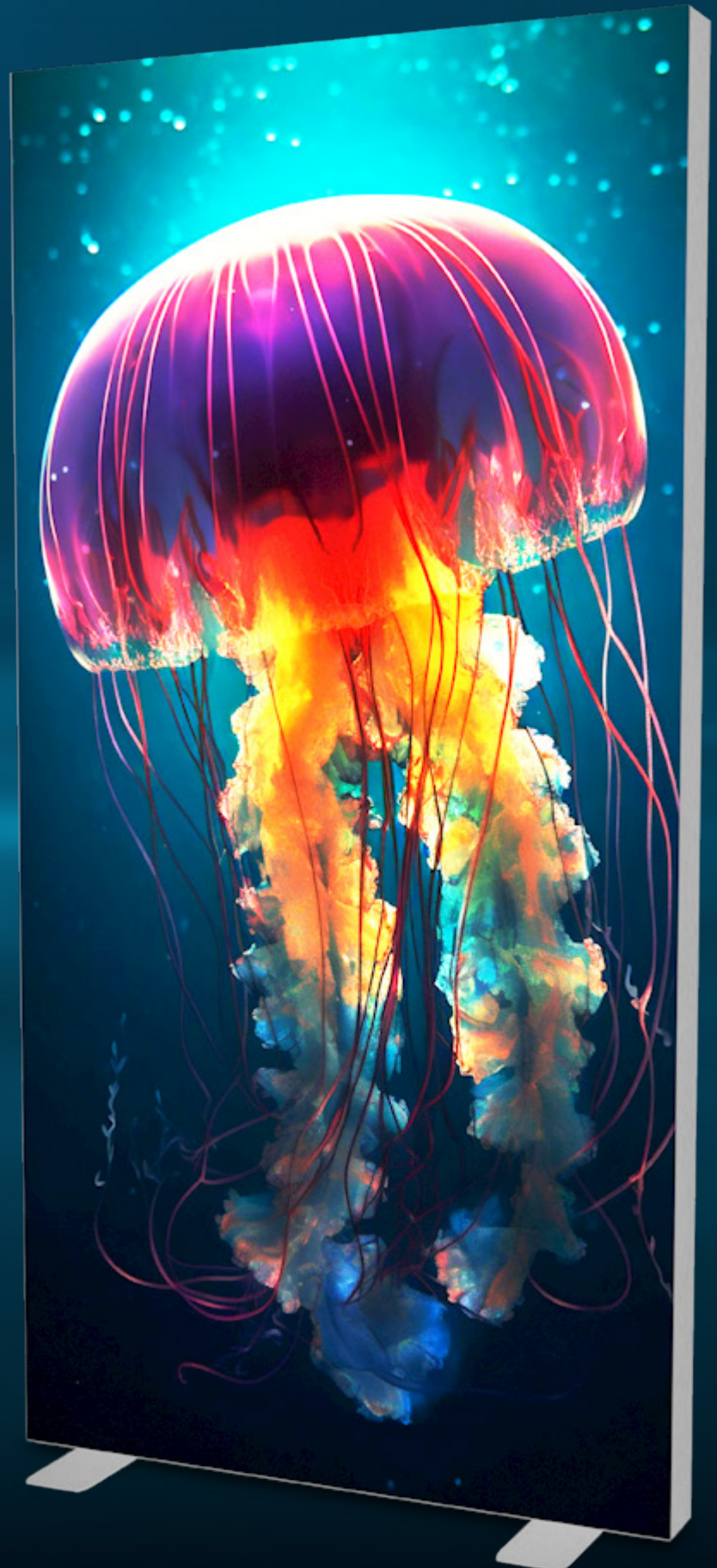
Optional iLLumigo™ bag



# ILLUMINATE TO COMMUNICATE

Ideal for:

- Roadshows
- Product launches
- Events
- Retail
- Receptions
- Interiors
- Exhibitions
- Meeting rooms



# iLLUMiGO<sup>2x2</sup>™

ILLUMINATE TO COMMUNICATE

At 2 x 2m square, the iLLUMiGO™ creates an impressive double-sided display area, ideal for showcasing visually striking imagery and vibrant colours. Quick and easy to assemble, this stylish unit packs neatly away into the branded carry case, for compact storage when not in use.

<b>Material</b>	Aluminium
<b>Profile width</b>	100 mm
<b>Profile Colour</b>	White
<b>Assembly</b>	Tool-free
<b>Graphic area</b>	Double-sided
<b>Graphic attachment</b>	Silicone Edged Gasket 3 mm (SEG)
<b>Application</b>	Self-supporting with pivoting feet fixed to the structure
<b>Transport</b>	Protective box with carry handle



iLLUMiGO™ 2x2

2000(w) x 2000(h) x 390(d) mm



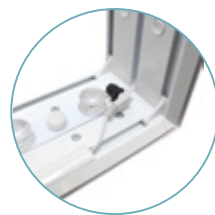
Branded protective box with carry handle



Metal straight connector



Numbered system for easy assembly



Pre-installed LED lights





# ILLUMINATE TO COMMUNICATE

Ideal backwall solution for:

- Small events
- Conferences
- Product launches
- Exhibition shell scheme

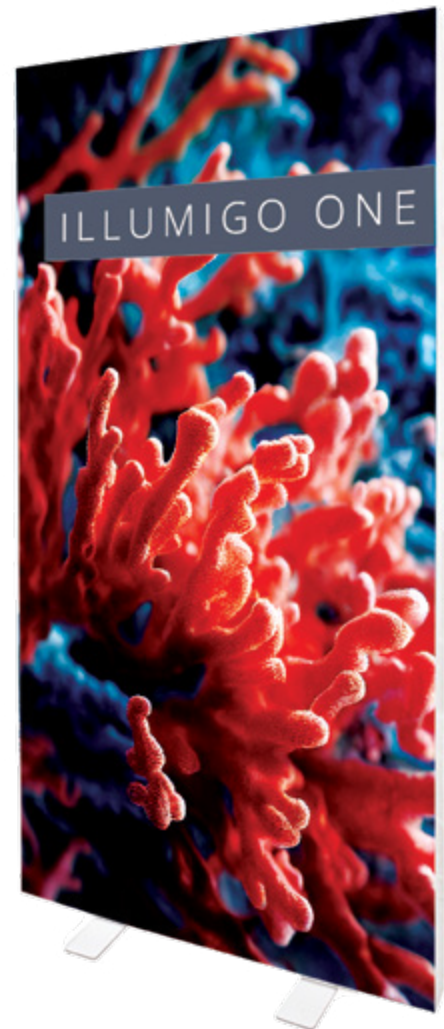


# iLLUMiGO<sup>one</sup>™

ILLUMINATE TO COMMUNICATE

iLLUMiGO™ ONE is the sleekest profile lightbox in the range, with a profile width of just 60mm. It is also the only display in the range to have a clever single-sided backlit LED rollable panel that is as simple and quick to deploy as traditional roller banner.

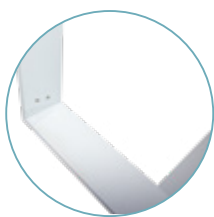
<b>Material</b>	Aluminium
<b>Profile width</b>	60 mm
<b>Profile Colour</b>	White
<b>Assembly</b>	Tool-free
<b>Graphic area</b>	Single-sided
<b>Graphic attachment</b>	Silicone Edged Gasket 3 mm (SEG)
<b>Application</b>	Self-supporting with pivoting feet fixed to the structure
<b>Transport</b>	Protective box with carry handle



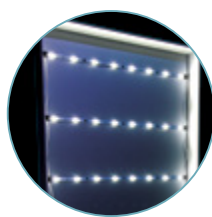
Illumigo™ One	ⓐ 850(w) x 2010(h) x 390(d) mm
Illumigo™ bag	ⓐ 460(w) x 1160(h) x 190(d) mm



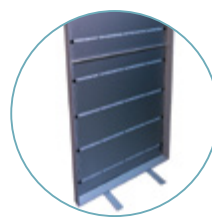
Branded protective box with carry handle



Tool-free assembly



Rollable LED panel



Single-sided frame



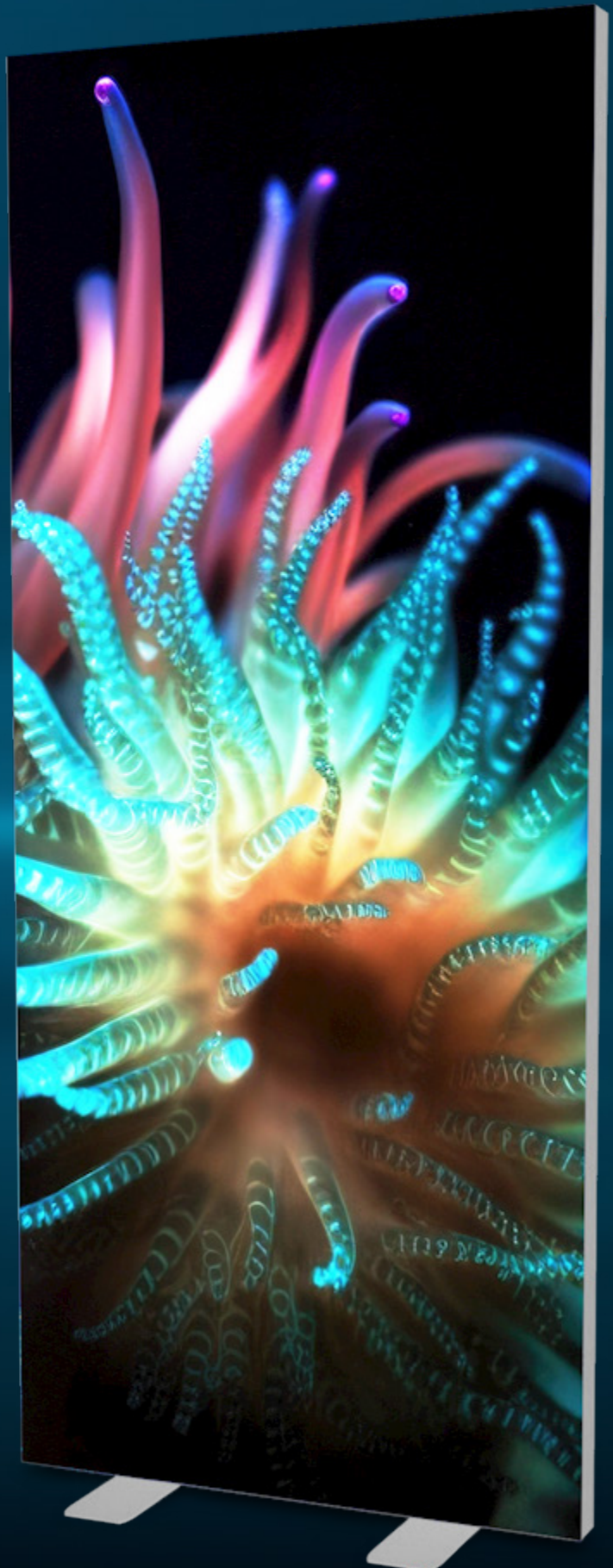
Optional iLLUMiGO™ bag



# ILLUMINATE TO COMMUNICATE

Ideal for:

- Conferences
- Roadshows
- Product launches
- Exhibitions



The compact double-sided iLLUMiGO™ Retail is specifically designed for the retail environment because of its size and stability. Standing 1600 x 600mm with a pre-assembled single foot, iLLUMiGO™ Retail can be assembled in just a few minutes - no tools needed!

<b>Material</b>	Aluminium
<b>Profile width</b>	100 mm
<b>Profile Colour</b>	White
<b>Assembly</b>	Tool-free
<b>Graphic area</b>	Double-sided
<b>Graphic attachment</b>	Silicone Edged Gasket 3 mm (SEG)
<b>Application</b>	Self-supporting with flat base fixed to the structure
<b>Transport</b>	Protective box with carry handle

iLLumigo™ Retail	ⓐ 600(w) x 1600(h) x 285(d) mm
iLLumigo™ bag	ⓐ 460(w) x 1160(h) x 190(d) mm



Branded protective box with carry handle



Numbered system for easy assembly



Pre-installed LED lights



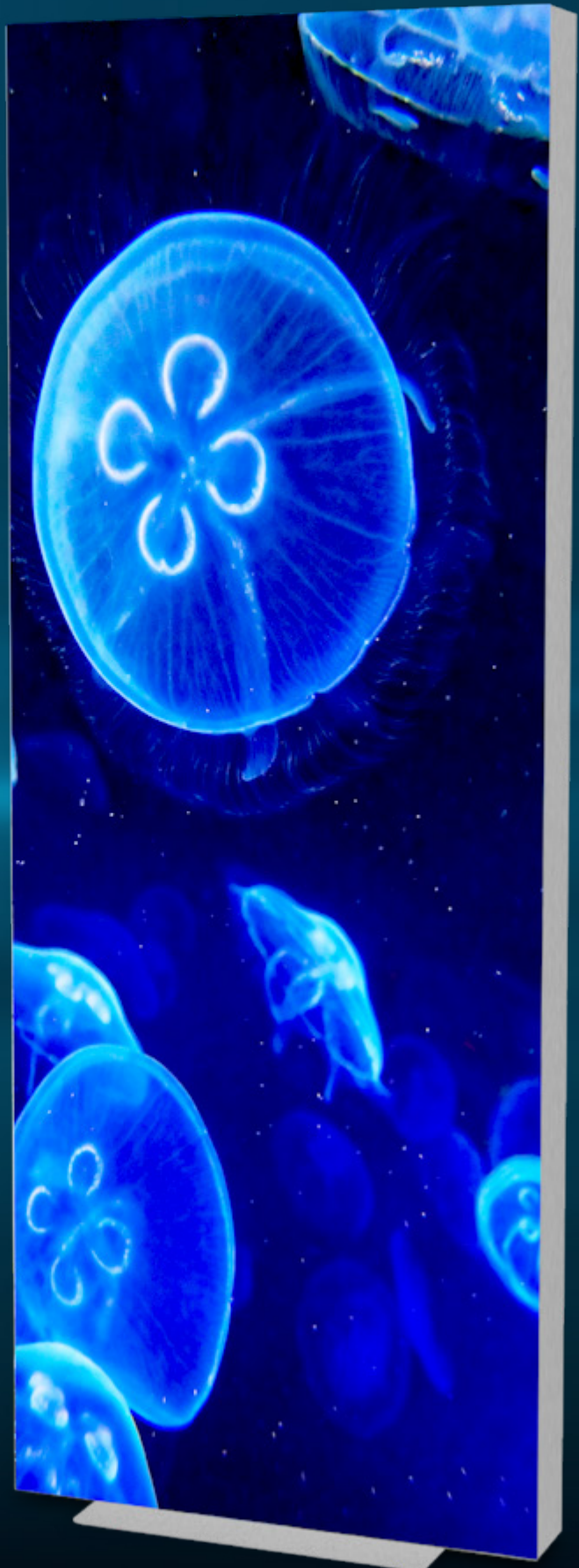
Optional iLLUMiGO™ bag



# ILLUMINATE TO COMMUNICATE

Ideal for:

- Store entrances
- Event zones
- Window displays
- Free-standing lightbox displays
- Store navigation signage



Stylish and impactful, the LED lit double-sided iLLUMiGO™ Counter is versatile and quick to set-up. A great all-rounder, not only at events but in retail environments from shopping centres to pop-up shops. The counter is easy to assemble, with a two-part countertop that secures using a pair of twist out top locators and locking screws.

<b>Material</b>	Aluminium 100 mm, MDF table top
<b>Assembly</b>	Tool-free
<b>Collapsible</b>	Yes
<b>Counter top</b>	White
<b>Graphic attachment</b>	Silicone Edged Gasket 3 mm (SEG)
<b>Transport</b>	Protective box with carry handle
<b>LED System</b>	Led strips included

Illumigo™ Counter	ⓐ. 1045(h) x 1040(w) x 420(d) mm
Illumigo™ Bag	ⓐ. 460(w) x 1160(h) x 190(d) mm



Branded protective box with carry handle



Pre-assembled LEDs in the frame



Steel side feet for stability



Optional Illumigo™ bag



# ILLUMINATE TO COMMUNICATE

Ideal for:

- Events
- Retail environments
- Shopping centres
- Pop-up shops






# THE COMPLETE SOLUTION

PRINT | PROMOTIONAL | DESIGN

Tel: 029 2000 3846

Email: [sales@aamedia.co.uk](mailto:sales@aamedia.co.uk)

Web: [aamedia.co.uk](http://aamedia.co.uk)

 AA Media Print & Media Management

iLLUMiGO<sup>TM</sup>  
ILLUMINATE TO COMMUNICATE