



NEW ENDLESS POSSIBILITIES ON GIFTING

THE COMPLETE
SOLUTION
PRINT | PROMOTIONAL | DESIGN



INTRODUCTION

Welcome to our 2024 inspirational gifting catalogue showcasing exclusively NEW products for the upcoming season.

Discover the endless possibilities this collection has to offer: a wide selection of more sustainable options, Recycled Classics, and products made in Europe. A new collection of brands, on-trend products, and colour ranges to match your logo, for any occasion and budget.

All selected with care: Products that last, and people love to use, with many customisation options. A collection perfectly suited to put the end customer's brand in the spotlight.

The possibilities are endless...



4



26



52



74



90



118

DRINKWARE





DRINKWARE

Our offer of new drinkware is selected with care. Endless possibilities for every occasion and budget: The Illuminate bottle for an active lifestyle, the Java tumbler for the office or on the go. Discover more sustainable options like our new Recycled Classic Sullivan flask, on-trend items like the Melbourne and Sydney mugs, or new additions to our retail brands CamelBak and Ocean Bottle.

Branded with your logo, it's the perfect way to promote your brand wherever you go.

MELBOURNE

1200 ml



100801 | MELBOURNE 1200 ML RCS CERTIFIED
MUG WITH STRAW | Recycled stainless
steel | 2.323 kg CO₂e





Certified by Control Union
CU 1019665



SYDNEY

1200 ml



100802 | SYDNEY 1200 ML DOUBLE WALL
RCS CERTIFIED COPPER VACUUM INSULATED
MUG WITH STRAW | Recycled stainless
steel | 2.801 kg CO₂e
●●●●●

Ocean bottle





MUG

100817 | OCEAN BOTTLE 350 ML INSULATED TRAVEL MUG | Recycled stainless steel | Ø 12 x 11.2 cm | 1.493 kg CO₂e

TUMBLER

100818 | OCEAN BOTTLE 350 ML INSULATED TUMBLER | Recycled stainless steel | Ø 8.2 x 13.7 cm | 1.144 kg CO₂e



100755 | CAMELBAK® FORGE FLOW 500 ML VACUUM INSULATED TUMBLER | Stainless Steel | Ø 7.2 x 22.1 cm | 2.080 kg CO₂e

GOT YOUR BAK™ LIFETIME GUARANTEE*

*For all CamelBak bottles covering manufacturing defects in materials and workmanship for the lifetime of the product.



100756 | CAMELBAK® FORGE FLOW 350 ML VACUUM INSULATED TUMBLER | Stainless Steel | Ø 7.2 x 18.3 cm | 2.080 kg CO₂e

CAMELBAK®





100809 | FIKA 340 ML TUMBLER WITH BAMBOO SLEEVE | Stoneware | 6.4 x 11.7 cm | 0.360 kg CO₂e
●●○



100807 | COLOSSAL 500 ML CERAMIC MUG | Ceramic | 15.5 x 10.5 cm | 1.863 kg CO₂e
●●●○



100805 | OLYMPIA 140 ML STACKABLE EXPRESSO CUP WITH CLAY BOTTOM | Ceramic | 5 x 7.1 cm | 0.538 kg CO₂e
●●●○



100808 | JAVA 330 ML CERAMIC TUMBLER WITH SILICONE WRAP AND PLASTIC LID | Ceramic | 1.230 kg CO₂e
●●○



JAVA
330 ml



Certified by Control Union
CU 1019665

100804 | DUO 80 ML RCS CERTIFIED STAINLESS STEEL ESPRESSO CUP SET
●● Recycled stainless steel | 0.299 kg CO₂e

DUO

80 ml



RECYCLED CLASSICS





In our pursuit of environmental responsibility. We launched new and recycled versions of our bestselling articles. We are striving to replace existing products with more sustainable alternatives.



Certified by Control Union
CU 1019665



100799 | CORZO 350 ML RCS CERTIFIED COPPER VACUUM INSULATED CUP | Recycled stainless steel | 8.9 x 11.42 cm | 0.851 kg CO₂e
●●●●●○

NEW COLOURS



100777 | SKY 650 ML RECYCLED PLASTIC WATER BOTTLE | Recycled PET
Plastic | Ø 6.75 x 6.75 x 25.4 x 6.75 cm | 0.230 kg CO₂e
●●●●○



100737 | BODHI 500 ML RPET WATER BOTTLE | Recycled PET
Plastic | 6.5 x 6.5 x 20 cm | 0.230 kg CO₂e
●●●●●○



Certified by Control Union
CU 1019665



100785 | BEBO 500 ML RECYCLED PLASTIC WATER BOTTLE | RCS certified
recycled PET plastic | Ø 4.58 x 6.85 x 19.3 x 6.85 cm | 0.230 kg CO₂e
●●●●○

ILLUMINATE

600 ml





100679 | ZIGGS 650 ML RECYCLED PLASTIC WATER BOTTLE | Recycled PET
Plastic | Ø 7.4 x 20.8 cm | 0.265 kg CO₂e
●●○



In our pursuit of environmental responsibility, we launched new and recycled versions of our bestselling articles. We are striving to replace existing products with a more sustainable option.

NEW
COLOURS

ZIGGS

650 ml





TRINITY

600 ml

Designed for sports, travel, and everyday life, the Trinity water bottle is your perfect companion wherever you go. Its carry loop fits comfortably in your hand and also allows you to attach the bottle with a carabiner.



100815 | TRINITY 600 ML GRS CERTIFIED RECYCLED ALUMINIUM WATER BOTTLE WITH RPET LID | Recycled Aluminium | 0.412 kg CO₂e





Certified by Control Union
CU 1019665

100790 | COVE 500 ML RCS CERTIFIED RECYCLED STAINLESS STEEL VACUUM INSULATED BOTTLE | Recycled stainless steel | Ø 7.1 x 7.1 x 27 x 7.1 cm | 0.940 kg CO₂e
●●●●●●●●



Certified by Control Union
CU 1019665

100736 | VASA 500 ML RCS CERTIFIED RECYCLED STAINLESS STEEL COPPER VACUUM INSULATED BOTTLE | Recycled stainless steel - PP Plastic | Ø 7.05 x 26.4 cm | 1.450 kg CO₂e
●●●●●●●●



100798 | SPRING 500 ML RCS CERTIFIED COPPER VACUUM INSULATED BOTTLE | Recycled stainless steel | 7.4 x 22.4 cm | 1.547 kg CO₂e
●●●●●



In our pursuit of environmental responsibility, we launch the recycled version of our bestselling Sullivan vacuum insulated flask. We are striving to replace existing products with a more sustainable option.



Certified by Control Union
CU 1019665



I AM
MADE FROM
RECYCLED
STAINLESS STEEL

100797 | SULLIVAN 750 ML RCS CERTIFIED VACUUM INSULATED FLASK | Recycled stainless steel | 7.9 x 28.7 cm | 2.321 kg CO₂e
●○○

STATIONERY & WRITING





STATIONERY & WRITING

People will always turn to notebooks and pens for their timeless charm and connection to creativity.

Discover our new collection of gift sets and wide colour pen ranges to match your logo. More sustainable options with an offer on innovative materials like the Liliana notebook made from sugarcane, or our new collection of pens made in Europe. Well-known brands like Parker with the Jotter Special Edition Global Icons – where each pen is dedicated to a single city with each finish telling the story of its architecture, culture, and people. Brands to support your branding and much more, all selected with care. The possibilities are endless.

Lorena Recycled plastic ballpoint pen



107921 ● | 107922 ● | LORENA RABS BALLPOINT PEN | Recycled ABS Plastic | Ø 1.02 x 14.3 cm | 0.024 kg CO₂e



107909 | 107910 | ELSA RECYCLED PLASTIC BALLPOINT PEN | Recycled ABS Plastic | Ø 1.1 x 13.9 cm | 0.022 kg CO₂e

107926 | 107927 | LUCIA RECYCLED PLASTIC BALLPOINT PEN | Recycled Plastic | Ø 1.3 x 14.5 cm | 0.024 kg CO₂e

107928 | 107929 | MARTHA RECYCLED PLASTIC BALLPOINT PEN | Recycled Plastic | Ø 1.05 x 14.8 cm | 0.029 kg CO₂e

107930 | ANA RECYCLED PLASTIC BALLPOINT PEN | Recycled Plastic | Ø 1 x 14.2 cm | 0.038 kg CO₂e



DELFINA BALLPOINT PEN

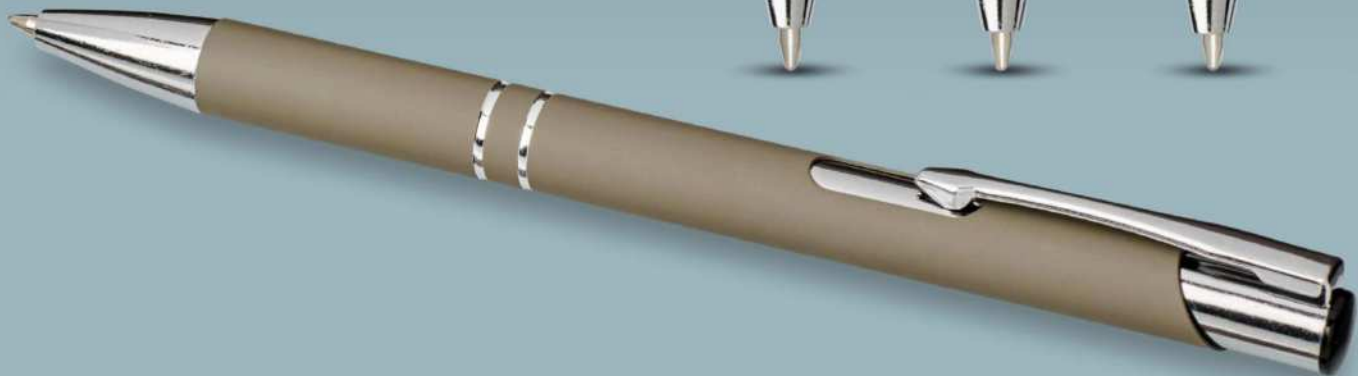
- Functions as a phone holder
- FSC certified bamboo



107898 ● | 107899 ● | **DELFINA PHONE HOLDER PEN** | FSC
certified bamboo | Ø 1 x 14.7 cm | 0.018 kg CO₂e



NEW
COLOURS



107437 ● | MONETA SOFT TOUCH BALLPOINT
PEN | Aluminium | Ø 0.8 x 13.5 cm | 0.147 kg CO₂e
● ● ● ● ● ●



Certified by Control Union
CU 1019665

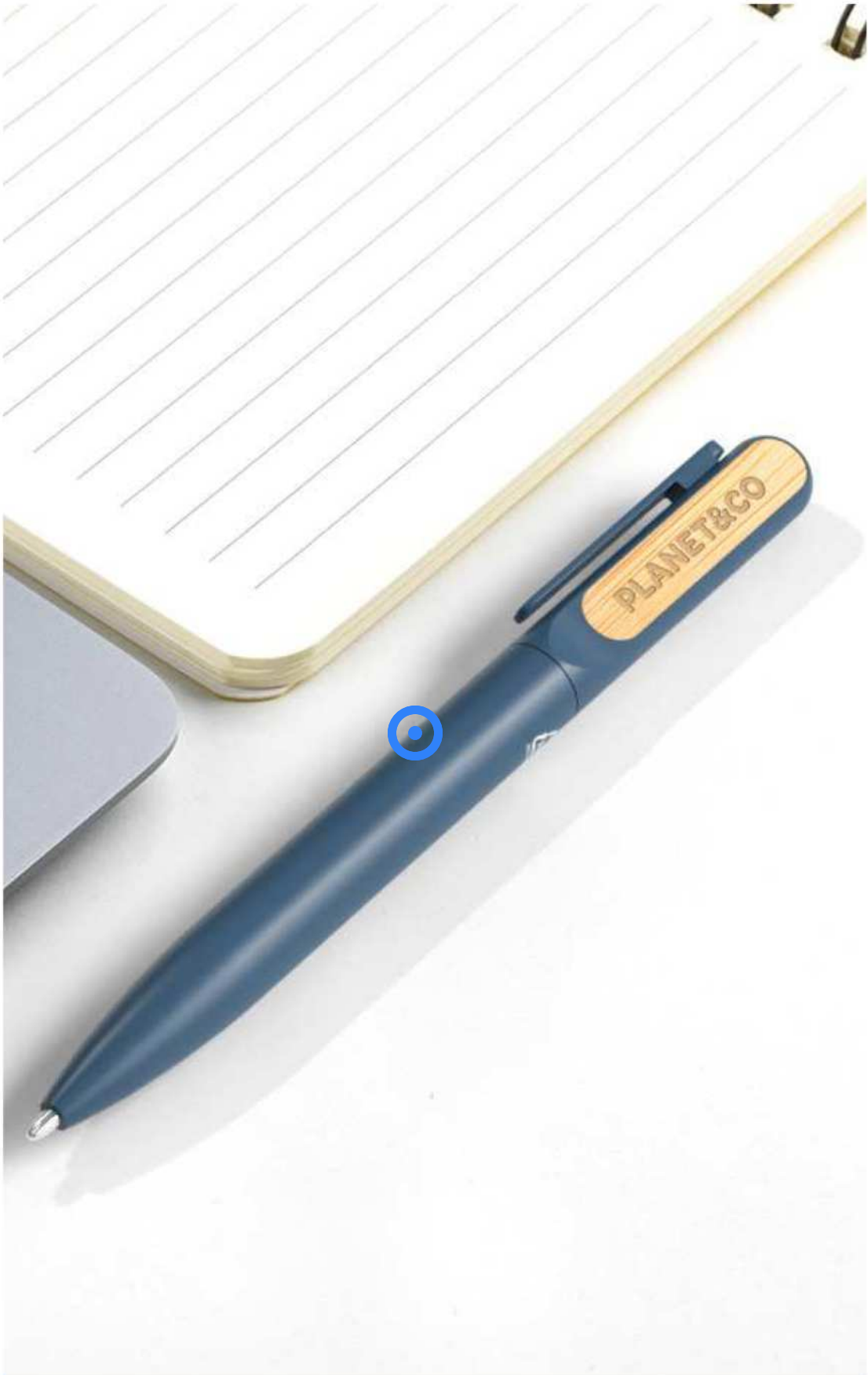
107908 | **DORA RECYCLED ALUMINIUM MULTIFUNCTIONAL PEN** | Recycled
Aluminium | Ø 1 x 15.3 cm | 0.088 kg CO₂e



Certified by Control Union
CU 1019665

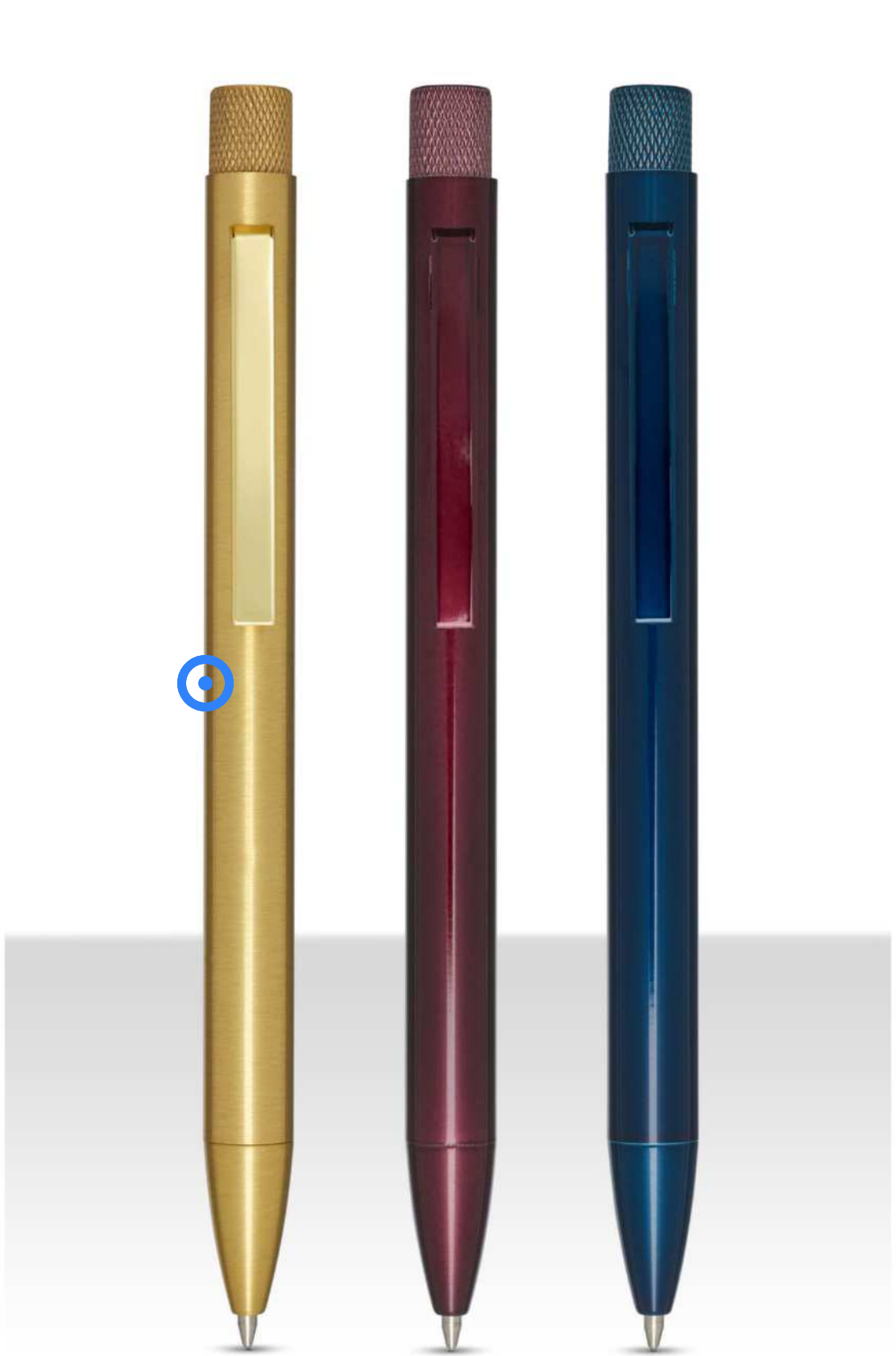
107916 | **107917** | **JUANA RECYCLED ALUMINIUM BALLPOINT PEN** | Recycled
Aluminium | Ø 1.5 x 14.5 cm | 0.071 kg CO₂e





Certified by Control Union
CU 1019665

107914 | **107915** | **BLANCA RECYCLED ALUMINIUM BALLPOINT PEN** | Recycled
Aluminium | Ø 1.2 x 14 cm | 0.083 kg CO₂e



Certified by Control Union
CU 1019665

107918 | **107919** | **BEATRIZ RECYCLED BRASS BALLPOINT PEN** | Recycled
brass | 0.127 kg CO₂e



LUXE



107924  | LEGATO BALLPOINT AND ROLLERBALL PEN SET | Recycled
brass | Ø 1.2 x 14.1 cm | 0.284 kg CO₂e

LUXE



107925 ♦ | LEGATO A5 NOTEBOOK WITH BALLPOINT AND ROLLERBALL PEN
SET | FSC certified paper | 24.5 x 23.3 x 2 cm | 0.457 kg CO₂e



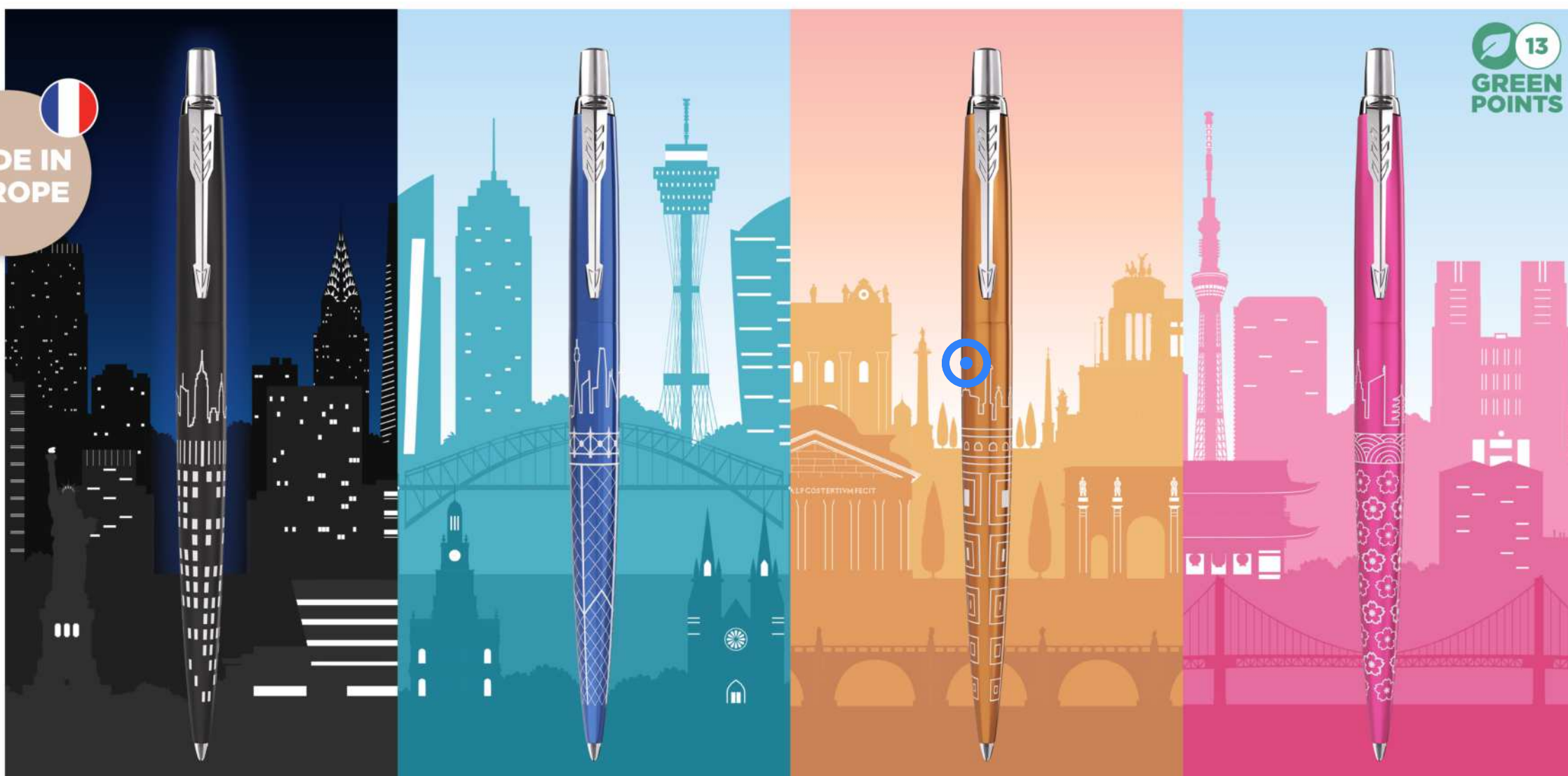


PARKER

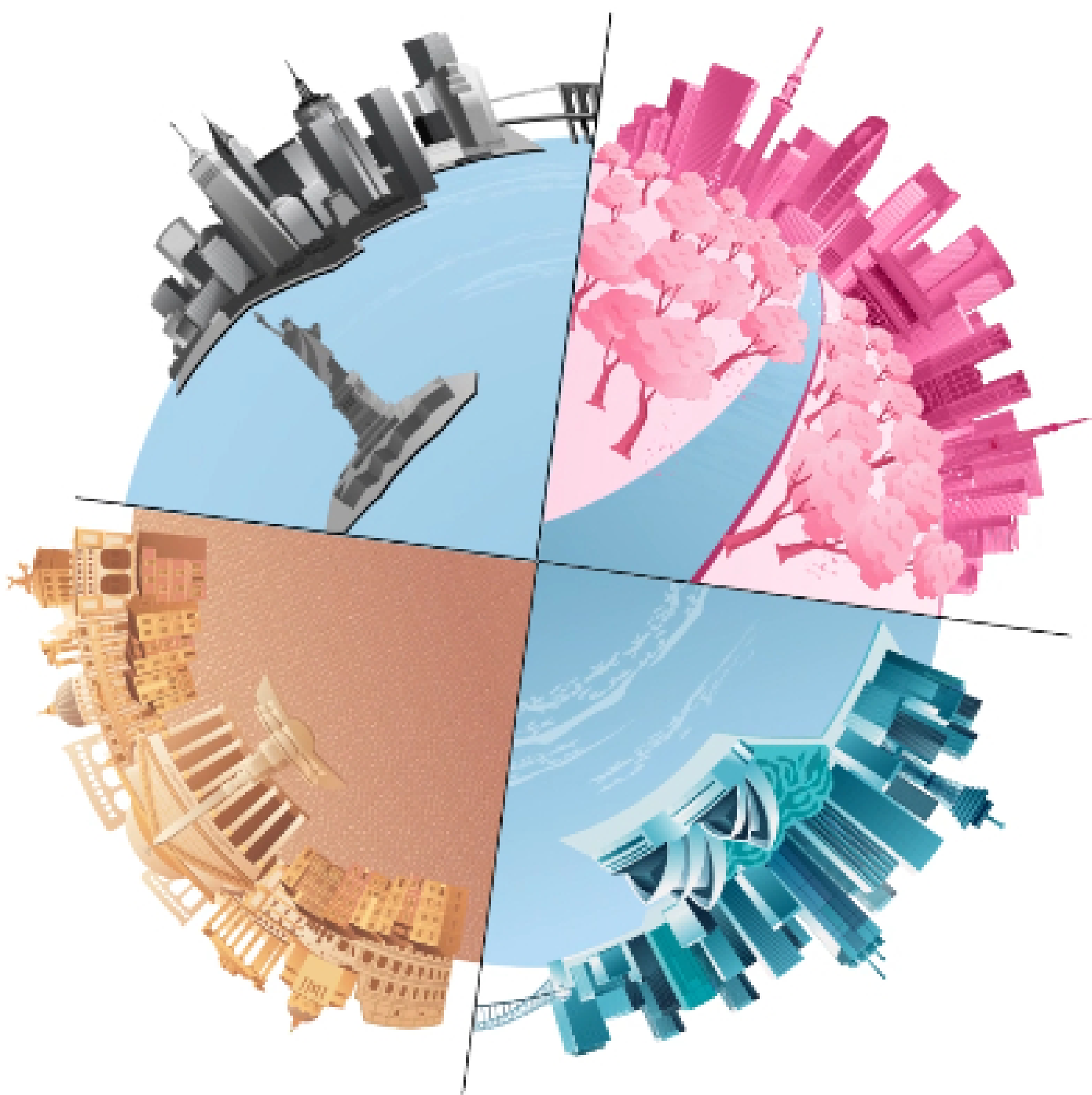
EST. 1888

JOTTER SPECIAL EDITION GLOBAL ICONS


**MADE IN
EUROPE**



 13
**GREEN
POINTS**



PARKER JOTTER'S 70TH ANNIVERSARY

2024 marks the 70th anniversary of the legendary design icon, highlighting its enduring appeal and legacy. For seven decades, the Parker Jotter has been at the forefront of innovation and timeless style.

JOTTER SPECIAL EDITION GLOBAL ICONS

Taking their inspiration from all four corners of the globe, each special edition pen is dedicated to a single city with each finish telling the story of its architecture, culture, and people. Distilling their story into a single pen design, the new Jotter collection will turn every day into an epic adventure.

MY STYLE,
MY STATEMENT

MADE IN
EUROPE



HÉMISPHERE COLOUR
BLOCKING COLLECTION

WATERMAN
PARIS



WATERMAN
PARIS

107961 | HEMISPHERE COLOUR BLOCKING BALLPOINT PEN WITH PALLADIUM
TRIM | Metal | Ø 1.1 x 13.7 cm | 0.086 kg CO₂e



WATERMAN
PARIS

107960 | **HEMISPHERE COLOUR BLOCKING ROLLERBALL PEN WITH PALLADIUM TRIM** | Metal | Ø 1.1 x 13.7 cm | 0.086 kg CO₂e



WATERMAN
PARIS

107934 | **HEMISPHERE COLOUR BLOCKING FOUNTAIN PEN WITH PALLADIUM TRIM** | Metal | Ø 1.1 x 13.7 cm | 0.086 kg CO₂e





107911 | LAURA A5 HARD COVER NOTEBOOK AND BALLPOINT PEN GIFT SET | FSC certified paper | 32 x 27 x 10.3 cm | 2.767 kg CO₂e



107912 | CARMEN A5 HARD COVER NOTEBOOK AND BALLPOINT PEN GIFT
SET | FSC certified paper | 36 x 30 x 8 cm | 3.018 kg CO₂e



106269 | ZUSE A7 RECYCLED JOTTER NOTEPAD WITH PEN | Recycled paper | 13.4 x 7.8 x 1.5 cm | 0.133 kg CO₂e
●●●●●



NEW COLOURS

106268 | PRIESTLY RECYCLED NOTEBOOK WITH PEN | Recycled paper | 18 x 14 x 1 cm | 0.296 kg CO₂e

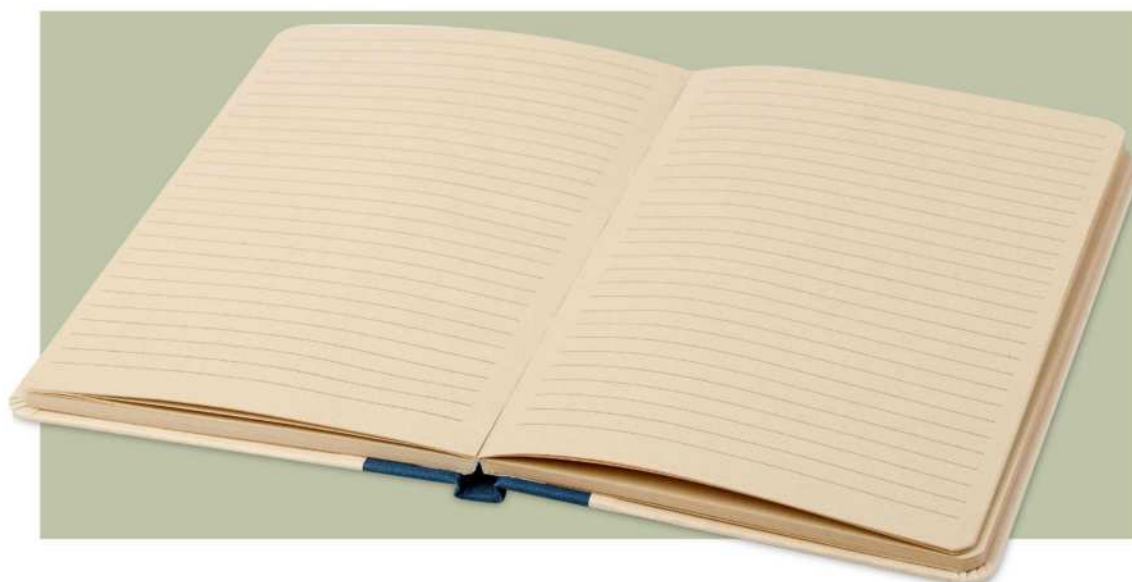
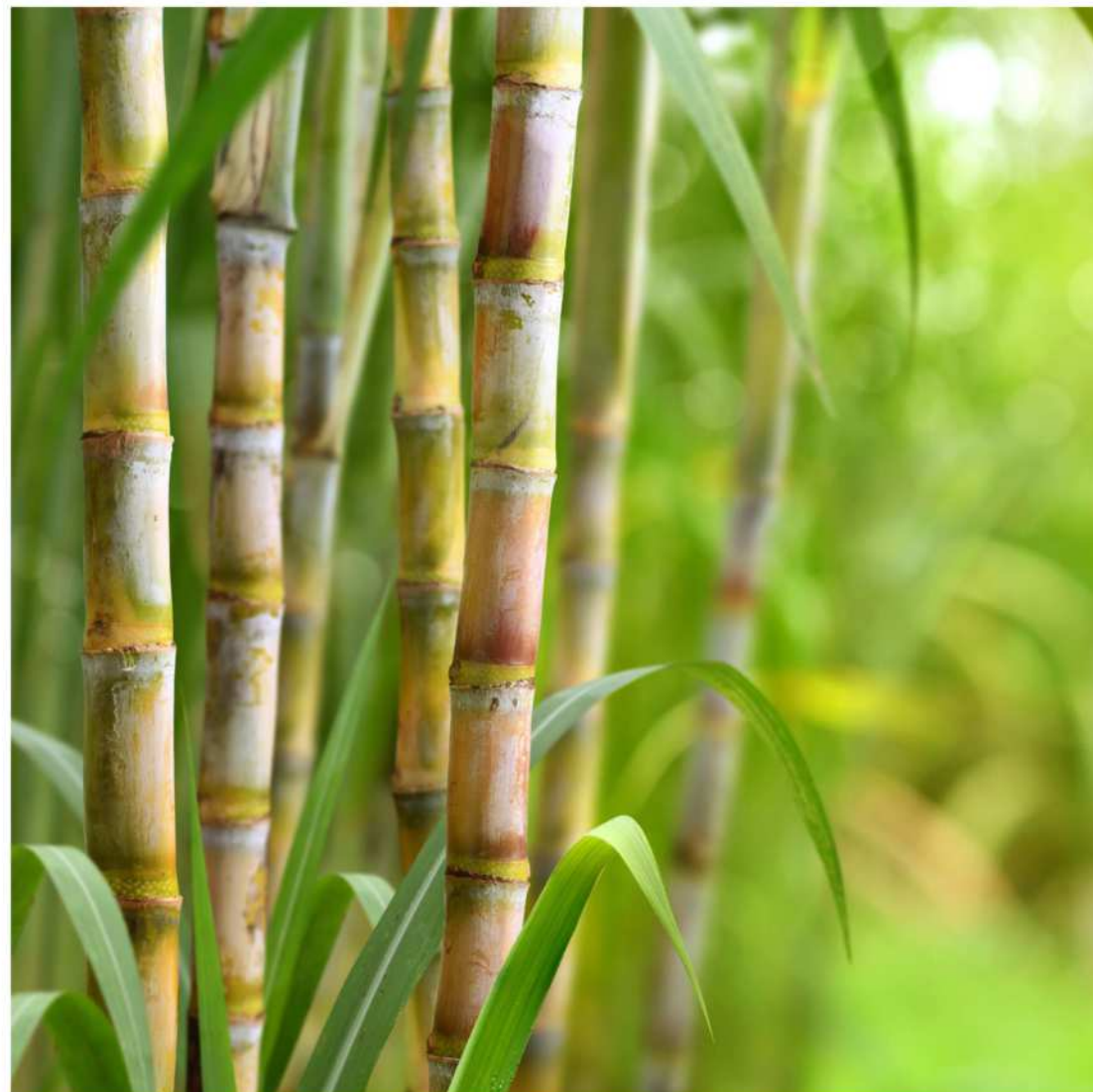
107903 | NELIDA A5 RECYCLED CARDBOARD HARD COVER NOTEBOOK | FSC certified paper | 21 x 14.5 cm | 0.386 kg CO₂e

106904 | SPECTRUM A5 HARD COVER NOTEBOOK | PU Plastic | 21.1 x 14 x 1.2 cm | 0.476 kg CO₂e

107763 | HONUA A5 RECYCLED PAPER NOTEBOOK WITH RECYCLED PET COVER | Recycled PET Plastic | 21.5 x 14.5 cm | 0.744 kg CO₂e

LILIANA A5

SUGAR CANE



18
GREEN
POINTS

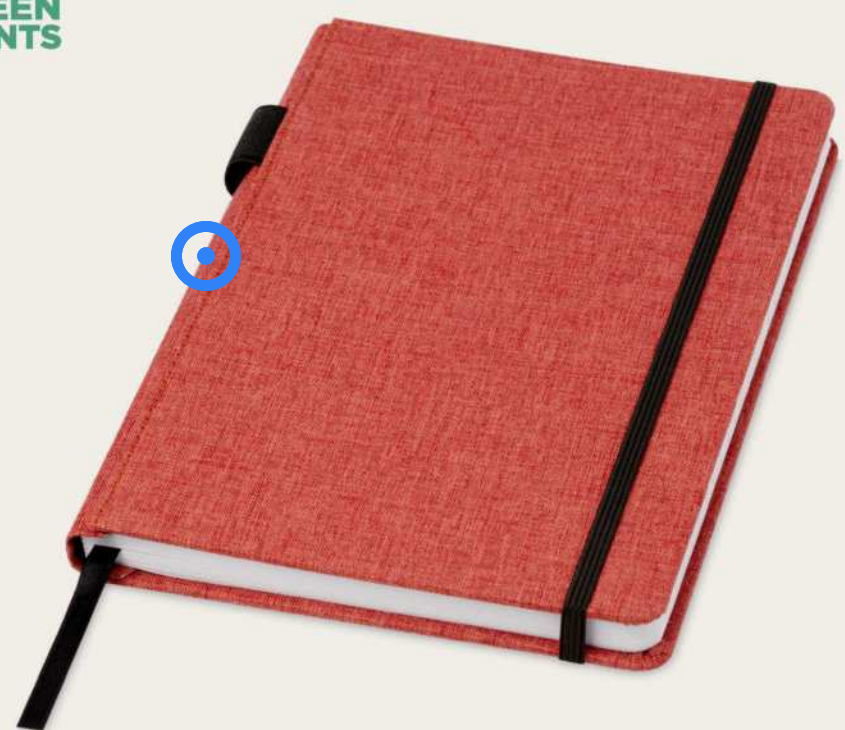


107923 | LILIANA A5 SUGAR CANE PLASTIC HARD COVER NOTEBOOK | Fruit
paper | 21 x 14.5 cm | 0.608 kg CO₂e





107900 | **RAMONA A5 COTTON NOTEBOOK** | FSC certified paper | 21.1 x 14.5 cm | 0.386 kg CO₂e



MARKS  **AN**
107742 | **ORIN A5 RPET NOTEBOOK** | Recycled Plastic | 21.5 x 14.5 cm | 0.729 kg CO₂e



FELT & CORK



107907 | VIVIANA A5 RECYCLED FELT AND CORK NOTEBOOK | FSC certified
paper | 21 x 14.6 cm | 0.451 kg CO₂e



107913 | VERONICA A5 HARD COVER NOTEBOOK | FSC certified
paper | 21 x 14.6 cm | 0.402 kg CO₂e



Classic A5 hard cover notebook



106181 | CLASSIC A5 HARD COVER NOTEBOOK | Cardboard | 21.3 x 14.5 x 1.5 cm | 0.279 kg CO₂e

This exclusive design classic hard cover notebook is ideal for writing and sharing notes. This Journalbooks notebook has an A5 size reference, with an elastic closure. The interior holds 80 sheets (80gsm) of lined paper and features an expandable pocket at the back to keep small notes. Branded with your logo, it's the perfect way to promote your brand wherever ever you go.



The mark of responsible forestry

107091 | SPECTRUM A5 NOTEBOOK WITH BLANK PAGES | PU
Plastic | 21 x 14.8 x 1.2 cm | 1.293 kg CO₂e



NEW COLOURS



NEW COLOURS



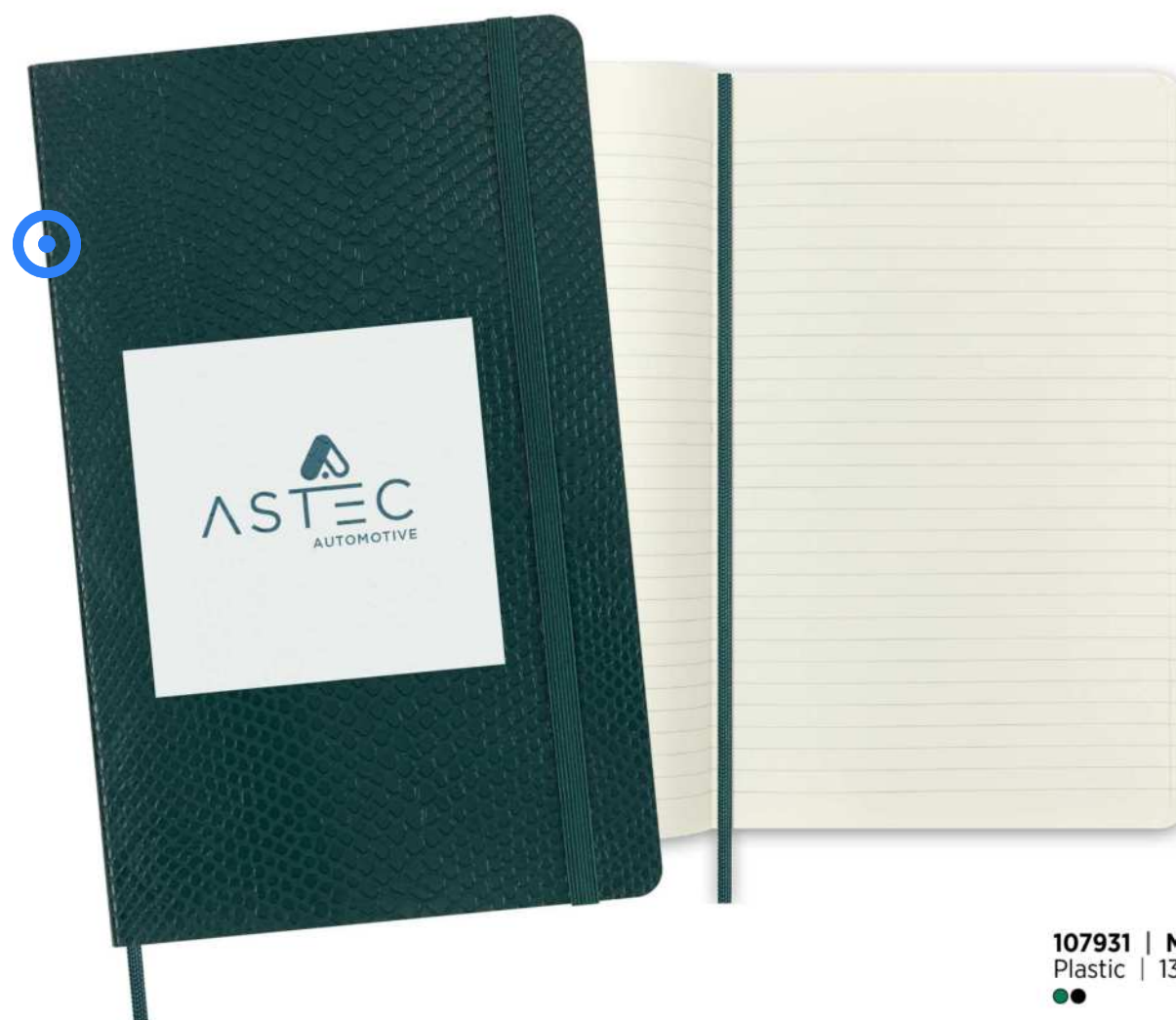
106263 | EXECUTIVE A4 HARD COVER
NOTEBOOK | Cardboard | 29.8 x 20.9 x 1.5 cm | 0.579 kg CO₂e



The mark of responsible forestry



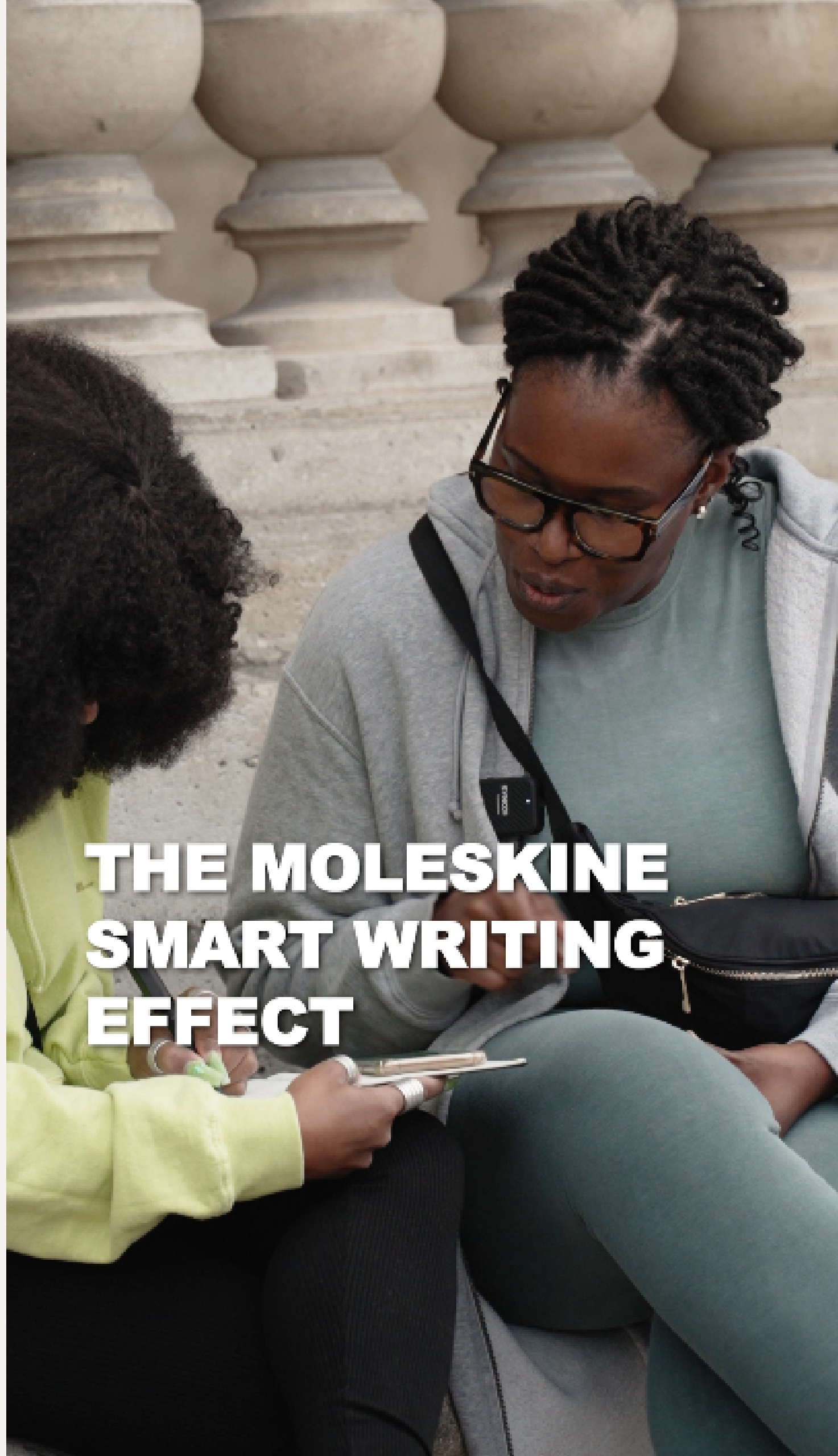
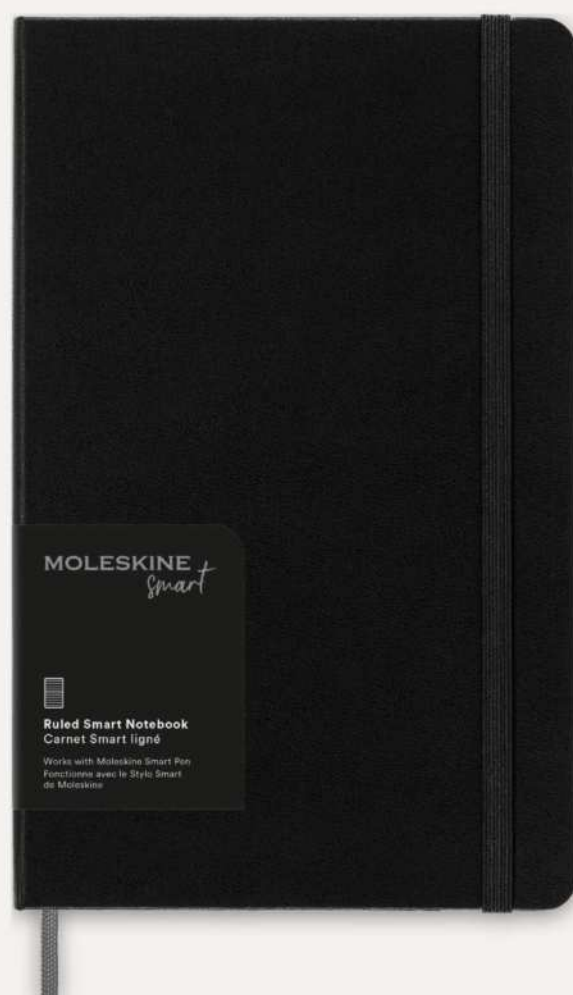
107932 | MOLESKINE VEGEA CAPRI L SOFT COVER NOTEBOOK - RULED | PP
Plastic | 13 x 1.5 x 21 cm | 1.693 kg CO₂e



THE LEGENDARY NOTEBOOK

107931 | MOLESKINE VEGEA BOA L SOFT COVER NOTEBOOK - RULED | PP
Plastic | 13 x 1.5 x 21 cm | 1.693 kg CO₂e





BAGS





BAGS

Selected with care: our new bags collection. With endless possibilities from backpacks to totes, more sustainable options like our new Recycled Classic Oregon drawstring backpack made from GRS-certified recycled cotton. The Ross travel accessories collection. Innovative designs like the modular Roam backpack or the introduction of a bags collection for Moleskine, each range with a distinctive personality. Elevate your brand visibility with our bags collection. Perfect for everyday use, they ensure your logo stands out wherever you go.



120715 | ROAM GRS RECYCLED MODULAR SLING BAG | GRS certified recycled polyester | 34.5 x 11 x 18.5 cm | 1.223 kg CO₂e

ROAM

3 + 1 MODULAR BACKPACK



120714 | ROAM GRS RECYCLED MODULAR BACKPACK | GRS certified recycled polyester | 30 x 18.5 x 55 cm | 2.904 kg CO₂e



120716 | ROAM GRS RECYCLED MODULAR TOILETRY BAG | GRS certified recycled polyester | 23.5 x 5.5 x 16 cm | 0.611 kg CO₂e



Ross GRS RPET Travel accessories



130047 | ROSS GRS RPET TOILETRY BAG 1.5L | GRS certified recycled polyester | 20.5 x 7.5 x 13 cm | 1.220 kg CO₂e
●●●

The Ross travel accessories collection is made from GRS-certified recycled polyester. The chain of custody system ensures every stage of production (including branding) is documented and audited for transparency. Manufacturers must maintain records of the recycled inputs used and their sources. GRS certified products are made from verified recycled materials, with a traceable supply chain from the original source. To be GRS certified a product must contain at least 50% recycled materials. Third-party certifiers verify the chain of custody every year, confirming that recycled materials are properly tracked. The end-user can have confidence in the authenticity of GRS-labeled products.



130058 | ROSS GRS RPET RFID PASSPORT HOLDER | GRS certified recycled polyester | 10 x 1 x 14 cm | 0.214 kg CO₂e
●●●



130048 | ROSS GRS RPET TECH POUCH 1L | GRS certified recycled polyester | 21 x 14.5 x 4 cm | 0.400 kg CO₂e
●●●



130057 | EXPEDITION PRO 17" GRS RECYCLED EXPANDABLE LAPTOP BACKPACK
35L | GRS certified recycled polyester | 31 x 15 x 48 cm | 4.126 kg CO₂e



120548 | HOSS 15.6" ROLL-UP LAPTOP BACKPACK
12L | Polyester | 25 x 14 x 43 cm | 2.781 kg CO₂e

OREGON



120735 | OREGON 140 G/M² GRS RECYCLED COTTON DRAWSTRING BAG | GRS
certified recycled cotton | 33 x 44 cm | 0.438 kg CO₂e
●●●●●



In our pursuit of environmental responsibility. We launched new and recycled versions of our bestselling articles. We are striving to replace existing products with more sustainable alternatives.

DISCOVER
THE OREGON
COLLECTION

ORISSA





Madras GRS recycled cotton tote bag



120733 | MADRAS 140 G/M² GRS RECYCLED COTTON GUSSET TOTE BAG | GRS certified recycled cotton | 38 x 8.5 x 41 cm | 0.500 kg CO₂e

The Madras gusset tote bag made from 100% GRS-certified recycled cotton is the perfect bag to give away during any event, or conference or to use as a shopping bag for small groceries. The cotton density of 140 g/m² cotton makes the bag sturdy, long-lasting, and suitable for carrying heavy items in the main compartment. With the 30 cm long shoulder handles this tote bag is easy to carry around. The print methods available for this tote bag are also certified, making sure that the entire supply chain is transparent and certified.



120734 | ODESSA 220 G/M² GRS RECYCLED COTTON LARGE TOTE BAG | GRS
certified recycled cotton | 57 x 16.5 x 42 cm | 0.500 kg CO₂e
○●●●●○



INTRODUCE YOUR DEVICES TO MOLESKINE



130067 | **MOLESKINE CLASSIC VERTICAL DEVICE BAG** | PU Plastic coated polyester | 30 x 8.5 x 40 cm | 6.409 kg CO₂e

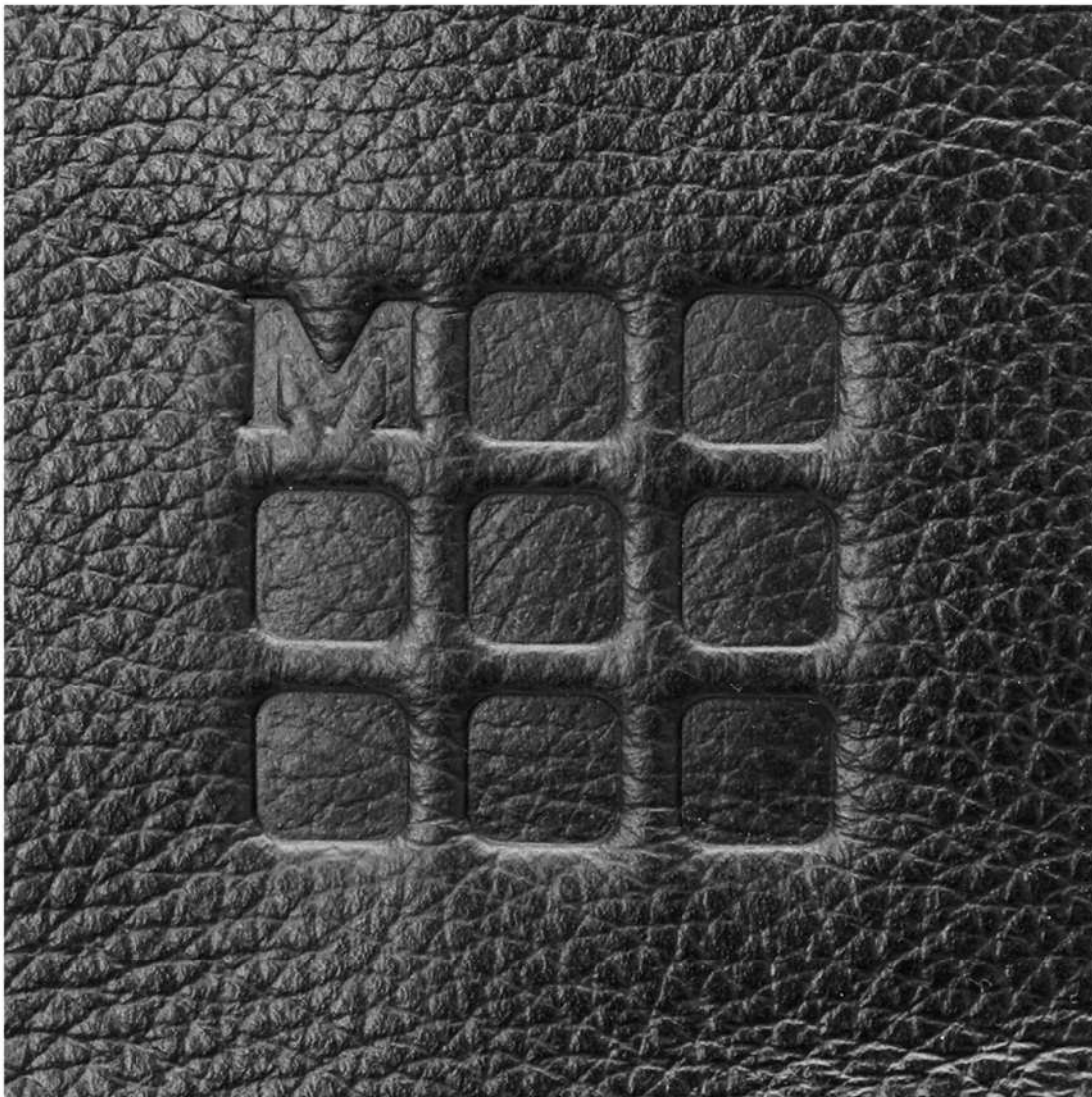




MADE IN
EUROPE

130068 | MOLESKINE CLASSIC BACKPACK | 33 x 12 x 41 cm

YOUR LIFE IS ON YOUR SHOULDERS



MADE IN
EUROPE

130070 | MOLESKINE CLASSIC LEATHER
BACKPACK | Leather | 32 x 12 x 37 cm | 12.184 kg CO₂e



MADE IN
EUROPE



130071 | MOLESKINE CLASSIC PRO BACKPACK



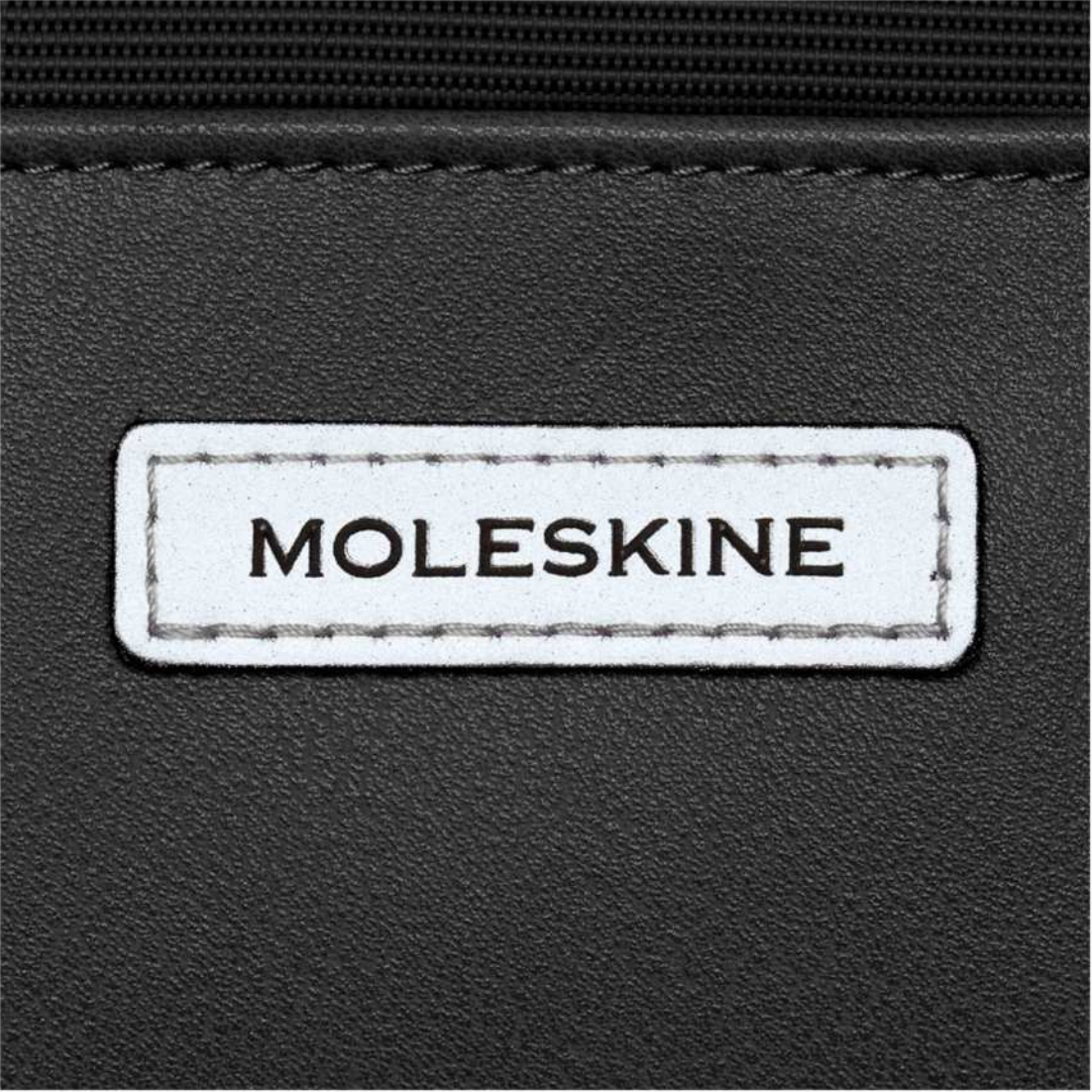


CLASSIC PRO COLLECTON



METRO COLLECTION

130073 | MOLESKINE METRO ROLLTOP BACKPACK





**120729 | THULE SUBTERRA 2 POWERSHUTTLE
MINI** | Polyester | 11.4 x 4.5 x 21.5 cm | 0.899 kg CO₂e



**120730 | THULE SUBTERRA 2 POWERSHUTTLE
MEDIUM** | Polyester | 22 x 5 x 14.5 cm | 0.903 kg CO₂e



**120728 | THULE SUBTERRA 2 BACKPACK
21L** | Polyester | 32 x 20 x 46 cm | 7.639 kg CO₂e



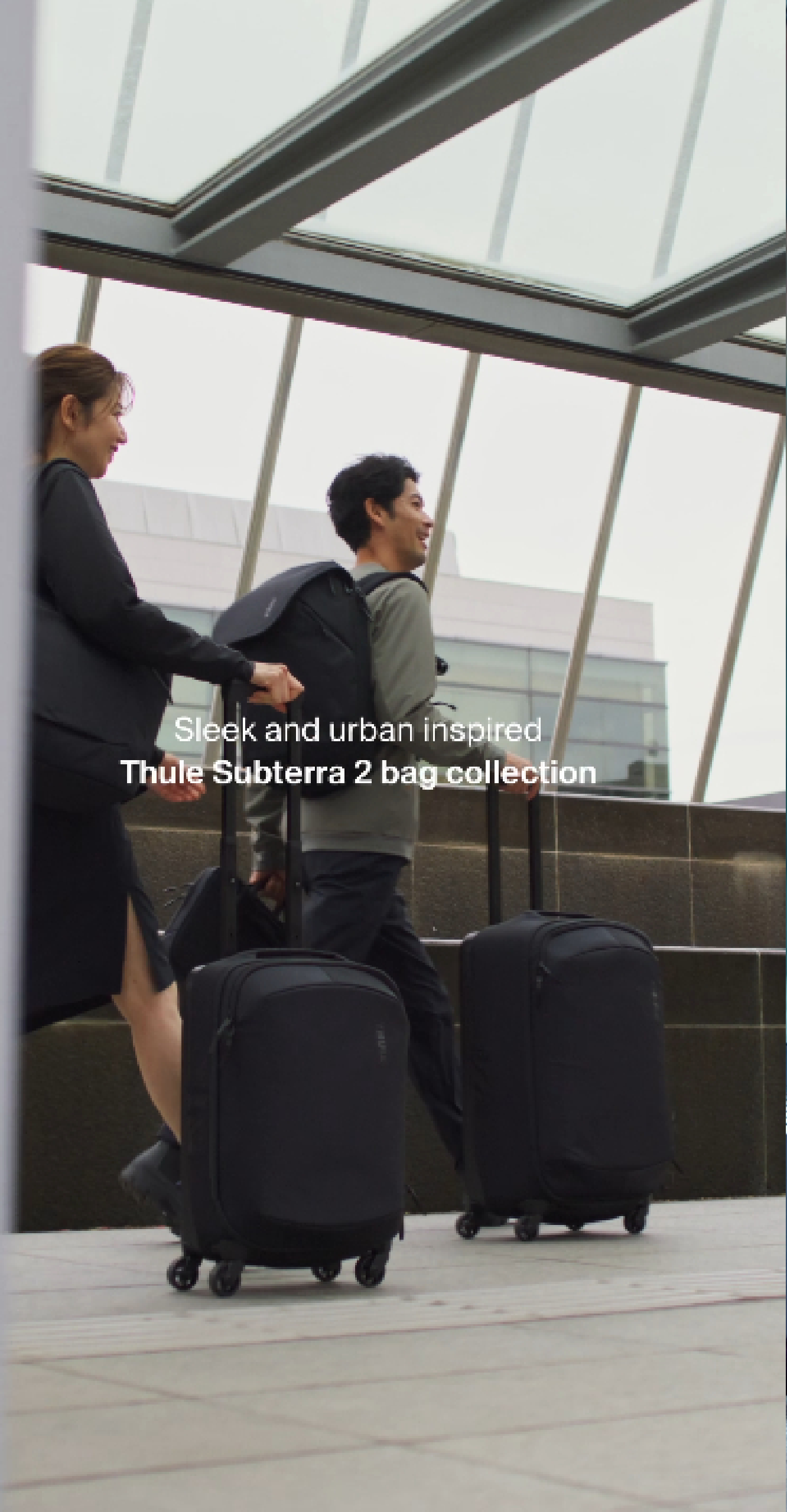
**120743 | THULE SUBTERRA 2 CARRY ON SPINNER
SUITCASE** | Polyester | 38 x 26 x 57 cm | 20.324 kg CO₂e

SUBTERRA 2

Sleek, versatile and city inspired items in the updated Thule Subterra 2 collection use bluesign® approved materials and nearly every item has achieved a full bluesign® product certification.

Sleek and urban inspired
Thule Subterra 2 bag collection

THULE®
SWEDEN





INVIGO

- RECYCLED MATERIALS THAT GIVE OLD PLASTICS NEW LIFE
- LONG-LASTING DESIGN TO STAND THE TEST OF TIME
- SOPHISTICATED LOOKS AND FUNCTIONALITY FOR THE MODERN PROFESSIONAL



120725 | CASE LOGIC INVIGO 15.6" RECYCLED LAPTOP ATTACHE BAG | Recycled Polyester | 40.5 x 29.5 x 5.5 cm

120727 | CASE LOGIC INVIGO 15.6" RECYCLED LAPTOP SLEEVE | Recycled Polyester | 40.5 x 5.5 x 29.5 cm | 0.670 kg CO₂e



120742 | CASE LOGIC INVIGO CONVERTIBLE TOTE BAG | Recycled Polyester | 36.5 x 18 x 43 cm | 1.823 kg CO₂e



120741 | CASE LOGIC INVIGO 15" BACKPACK | Recycled Polyester | 30.5 x 19 x 46 cm | 1.876 kg CO₂e

TECHNOLOGY





TECHNOLOGY

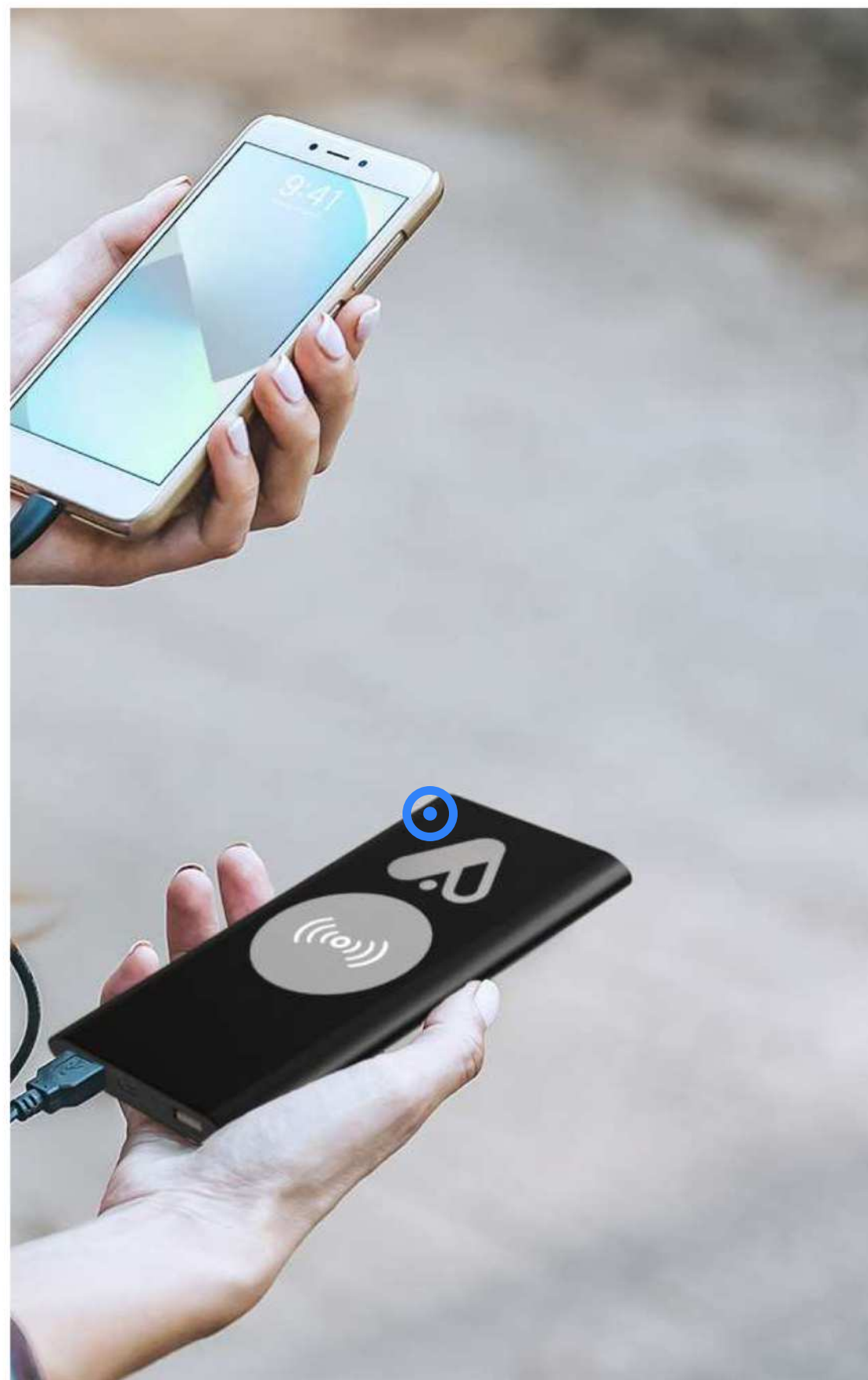
Technology has become an integral part of our daily lives, changing the way we work, live and communicate.

To fit every need and budget, the possibilities are endless; from more sustainable options with our new Recycled Classics range of powerbanks, to cables and charges to stay connected. And from our collection of Prixtion technology items, designed for life at home or on the go, to Xtorm who gives you and your devices #MoreEnergy, exactly when you need it. A collection designed to match your brand identity.



Certified by Control Union
CU 1019665

124383 | ASAMA 5000 MAH TYPE-C RECYCLED PLASTIC POWER BANK | Recycled ABS Plastic | 9 x 6.3 x 1.4 cm | 4.753 kg CO₂e
○●



Certified by Control Union
CU 1019665

124380 | PEP 4000 MAH TYPE-C RECYCLED ALUMINIUM POWER BANK | Recycled Aluminium | 11 x 6.8 x 1 cm | 4.874 kg CO₂e
●●●●●●●●



Certified by Control Union
CU 1019665

124384 | JUICE 4000 MAH TYPE-C RECYCLED ALUMINIUM WIRELESS POWER BANK | Recycled Aluminium | 12 x 6.8 x 1 cm | 4.914 kg CO₂e
●●●●●



Certified by Control Union
CU 1019665

124385 | JUICE 8000 MAH TYPE-C RECYCLED ALUMINIUM WIRELESS POWER BANK | Recycled Aluminium | 15 x 7.4 x 1.2 cm | 5.133 kg CO₂e
●●●●●



58
GREEN
POINTS

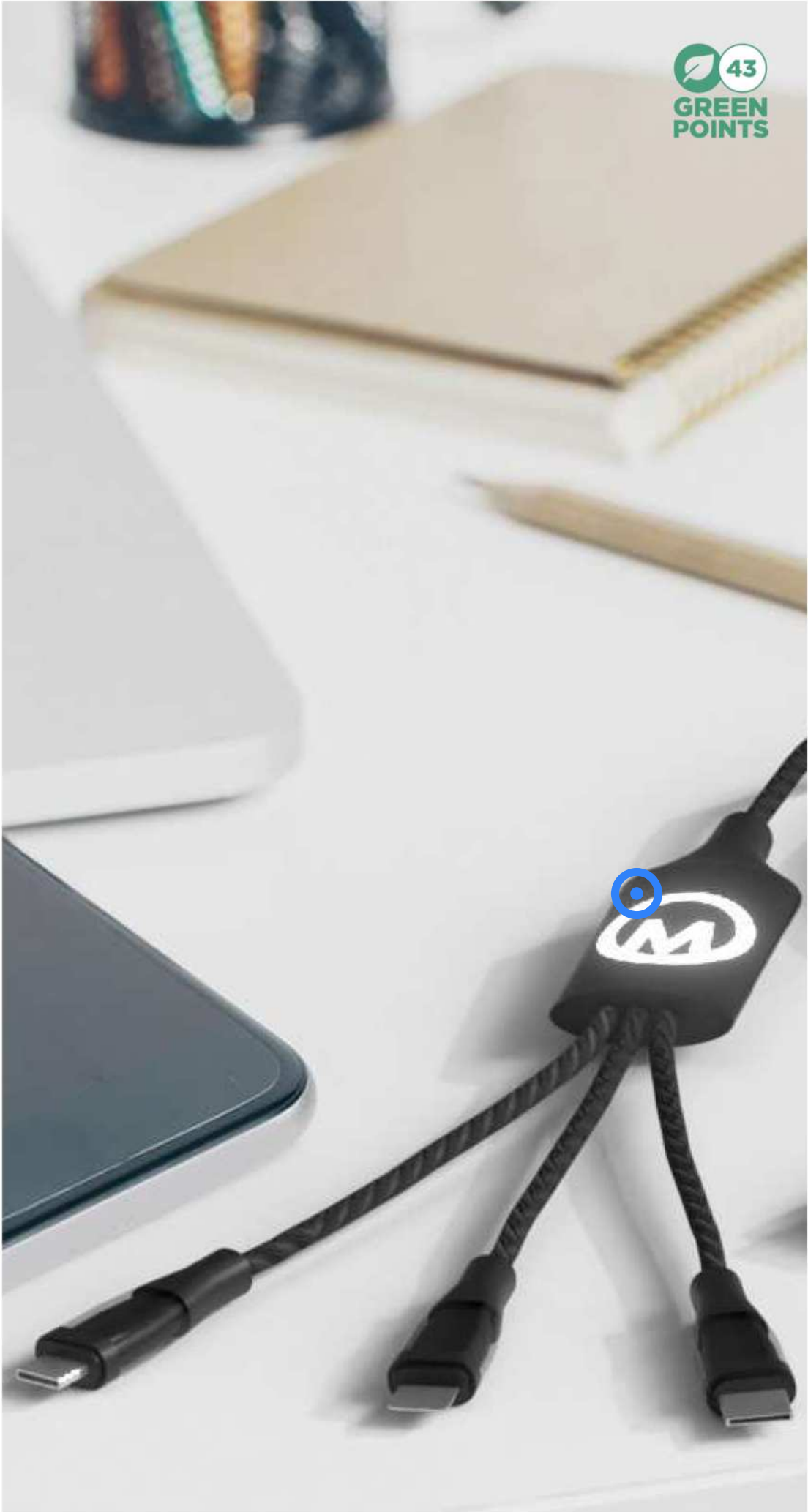


RECYCLED BLENDED
claim standard
Certified by Control Union
CU 1019665



124382 | METAL 4-IN-1 RECYCLED ALUMINIUM CHARGING CABLE WITH KEYCHAIN | Recycled Aluminium | 19.5 x 1.7 x 0.7 cm | 4.638 kg CO₂e

●●●●●





58
GREEN
POINTS



RECYCLED BLENDED
claim standard
Certified by Control Union
CU 1019665



124386 | VERSATILE 5-IN-1 RECYCLED ALUMINIUM CHARGING CABLE | Recycled Aluminium | 104 x 1.6 x 0.7 cm | 0.141 kg CO₂e

●●●●●

1PX162 | SCX.DESIGN C50 5-IN-1 FAST CHARGING 100W/5A CABLE WITH DIGITAL DISPLAY | Recycled PET Plastic | 20 x 8 cm

●



Certified by Control Union
CU 1019665



124387 | ESSENCE 15W BAMBOO WIRELESS CHARGING PAD | FSC certified bamboo | Ø 90 x 9 cm | 0.147 kg CO₂e



124371 | MENLO RCS RECYCLED PLASTIC WIRELESS MOUSE | Recycled ABS Plastic

PRIXTON



 12
GREEN
POINTS

1PA180 | PRIXTON SWB32 ALEXA
SMARTWATCH | Plastic | 11 x 7.5 x 5.5 cm | 4.824 kg CO₂e



 12
GREEN
POINTS

1PA181 | PRIXTON SWB33
SMARTWATCH | Plastic | 56.5 x 39 x 34.9 cm | 4.880 kg CO₂e



1PA172 | PRIXTON DV800 5K DUAL SCREEN ACTION CAMERA | Plastic | 10 x 9.4 x 11.4 cm | 5.612 kg CO₂e



1PA173 | PRIXTON DV670 4K DUAL SCREEN ACTION CAMERA | Plastic | 10 x 9.4 x 11.4 cm | 5.612 kg CO₂e



1PA174 | PRIXTON DELTA DRONE | Plastic | 22 x 18 x 7 cm | 6.092 kg CO₂e



1PA175 | PRIXTON ALPHA PRO DRONE | Plastic | 21.5 x 17 x 7 cm | 5.822 kg CO₂e

PRIXTON



1PA176 | PRIXTON TWS162
EARBUDS | Plastic | 12.9 x 8.55 x 3.85 cm | 4.732 kg CO₂e
 ●○



1PA169 | PRIXTON DRAGON GAMING KIT | ABS Plastic - PC
 Plastic | 46.5 x 14.5 x 21.2 cm | 12.378 kg CO₂e
 ●



1PA171 | PRIXTON NOVA 10,1" TABLET 4G
4/64GB | Plastic | 32.2 x 18.9 x 3.7 cm | 7.242 kg CO₂e
 ●



1PA168 | PRIXTON PARTYGO KARAOKE | ABS
Plastic | 29.6 x 18 x 27.8 cm | 16.084 kg CO₂e



1PA182 | PRIXTON BOOGIE CD
PLAYER | Plastic | 23.8 x 19.1 x 14.7 cm | 9.838 kg CO₂e



1PA166 | PRIXTON VC600 TURNTABLE | ABS
Plastic | 29.5 x 21 x 7 cm | 8.242 kg CO₂e

PRIXTON



1PA167 | PRIXTON ESSENCE HUMIDIFIER | ABS Plastic - PC Plastic | 21.5 x 8.6 x 18.2 cm | 7.208 kg CO₂e



NEW COLOURS



1PA130 | PRIXTON PRADO 10" WIFI DIGITAL PHOTO FRAME | ABS Plastic | 26.5 x 18 x 2.2 cm | 4.146 kg CO₂e



1PA177 | PRIXTON SAHARA
DEHUMIDIFIER | Plastic | 18.6 x 15.5 x 24.6 cm | 9.488 kg CO₂e
○



1PA170 | PRIXTON BT300 WINDOW CLEANING ROBOT | ABS
Plastic | 29.3 x 23 x 10 cm | 13.158 kg CO₂e
●



1PA179 | PRIXTON THOR CYCLONE VACUUM
CLEANER | Plastic | 65 x 28 x 14 cm | 16.857 kg CO₂e
●



1PA178 | PRIXTON CAPRI COFFEE MAKER WITH
GRINDER | Plastic | 29 x 18.1 x 38.5 cm | 14.611 kg CO₂e
●





43
GREEN
POINTS

124410 | XTORM FS5W051 5.000 MAH MAGNETIC WIRELESS POWER BANK | Recycled ABS Plastic | 10.7 x 6.8 x 1.3 cm | 4.811 kg CO₂e



43
GREEN
POINTS

124413 | XTORM FS5W101 10.000 MAH MAGNETIC WIRELESS POWER BANK | Recycled ABS Plastic | 11.1 x 7.2 x 2.4 cm | 5.033 kg CO₂e



124409 | XTORM GO2 12W 5.000 MAH FAST CHARGE POWER BANK | Recycled
ABS Plastic | 9.35 x 6.3 x 1.55 cm | 4.793 kg CO₂e
●●○

Learn more >

WE
GIVE YOU
#MoreEnergy

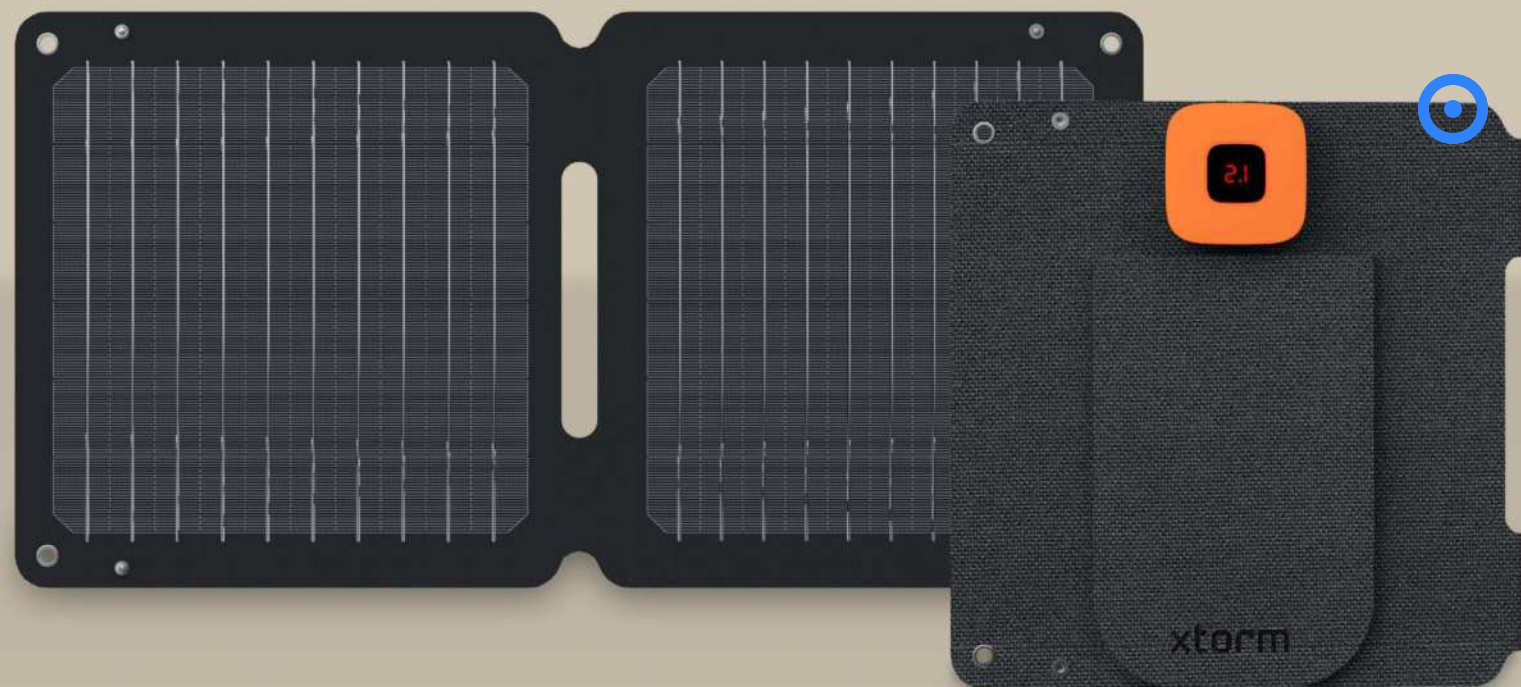


124411 | XTORM XG210 GO2 15W 10.000 MAH FAST CHARGE POWER
BANK | Recycled ABS Plastic | 14.2 x 6.8 x 1.55 cm | 4.977 kg CO₂e
●●●○

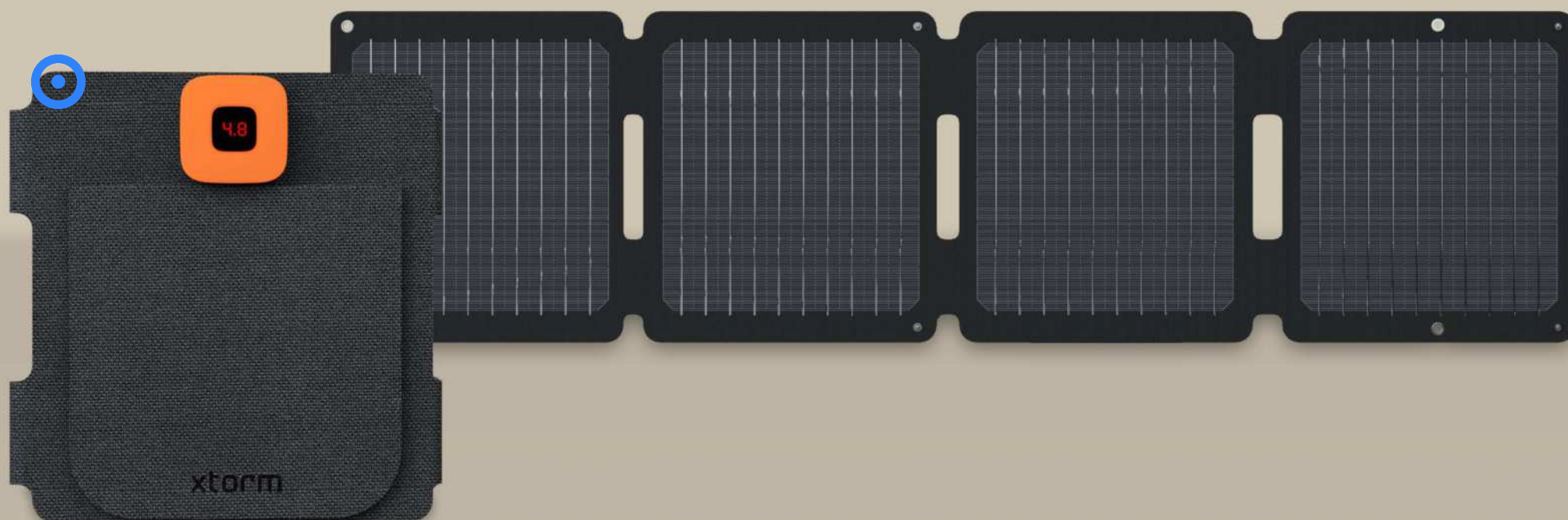


124412 | XTORM XG220 GO2 15W 20.000 MAH FAST CHARGE POWER
BANK | Recycled ABS Plastic | 14.2 x 7.2 x 2.76 cm | 5.304 kg CO₂e
●●●○





124414 | XTORM XR2S14 SOLARBOOSTER 14W FOLDABLE SOLAR PANEL | ETFE
(Ethylene Tetrafluoroethylene)



124415 | XTORM XR2S28 SOLARBOOSTER 28W FOLDABLE SOLAR PANEL | ETFE
(Ethylene Tetrafluoroethylene)

HOME & KITCHEN





HOME & KITCHEN

Provide the perfect gifts with our new Home & Kitchen collection. Discover our new brand: Original home.

A home accessory collection designed to create a greener planet. Gifts with a story, using materials with a low carbon footprint, handcrafted, and supporting small entrepreneurs with a sustainable and/or social mission and applying the principles of fair trade. Or our endless possibilities on more sustainable options such as aprons and towels made from recycled cotton, the Mangi lunchboxes great for on the go and homemade meals, a wine collection, and much more. Branded with your logo, it's the perfect way to promote your brand.

SEASONS

113378 | FLAVO PEPPER AND SALT MILL | Acacia wood | Ø 5.3 x 21.3 cm | 0.593 kg CO₂e



The mark of responsible forestry





113326 | ALORA 200 G/M² RECYCLED COTTON KITCHEN TOWEL | GRS certified recycled cotton | 50 x 50 cm

●●●●●

113325 | NIA 200 G/M² RECYCLED COTTON APRON | GRS certified recycled cotton | 100 x 70 cm

●●●●●

SEASONS



113371 | SONORA ACACIA WOOD CUTTING BOARD | Acacia wood | 32 x 24 x 1.2 cm | 1.380 kg CO₂e



SEASONS



113388 | **TIMBERITO PIZZA SET** | Acacia wood | 47.2 x 35.2 x 1.5 cm | 0.240 kg CO₂e







120665 | FELTA 75 CL GRS RECYCLED FELT WINE BAG | GRS certified recycled polyester | 15 x 42 cm | 0.153 kg CO₂e



113387 | VINO WINE HOLDER SET | Wood | 0.406 kg CO₂e



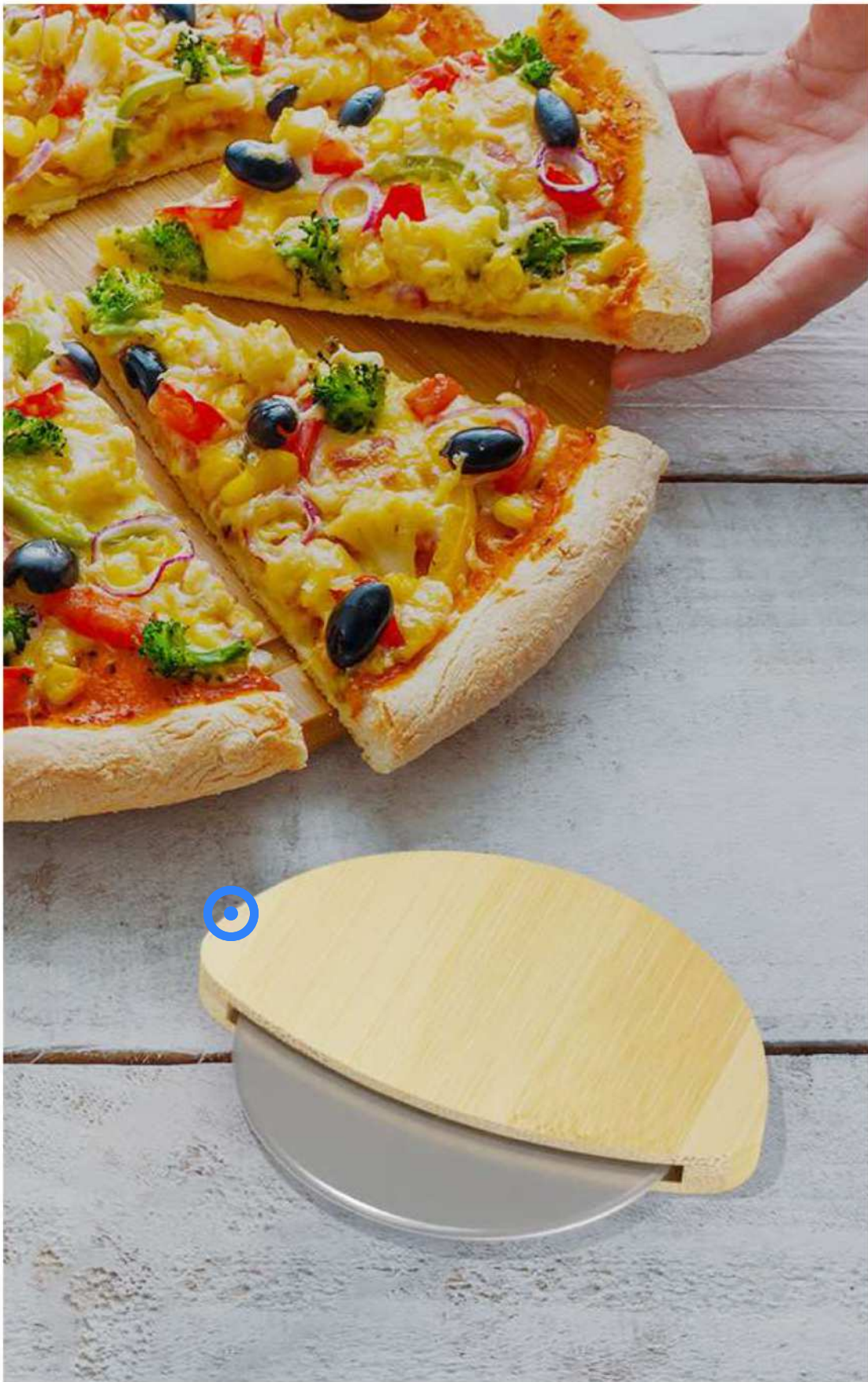
113390 | ROSSO 2-PIECE WINE GLASS SET | Glass | 23.5 x 8.5 cm | 0.756 kg CO₂e



113384 | FROZ STAINLESS STEEL ICE CUBES SET | Stainless Steel | 10 x 12 cm | 1.049 kg CO₂e



113383 | PEDRO STONE ICE CUBES SET | Cotton | 11 x 7.5 cm | 0.900 kg CO₂e



The mark of
responsible forestry

113381 | NAVAJO PIZZA CUTTER | Bamboo | 8.5 x 7.5 x 1.1 cm | 0.724 kg CO₂e

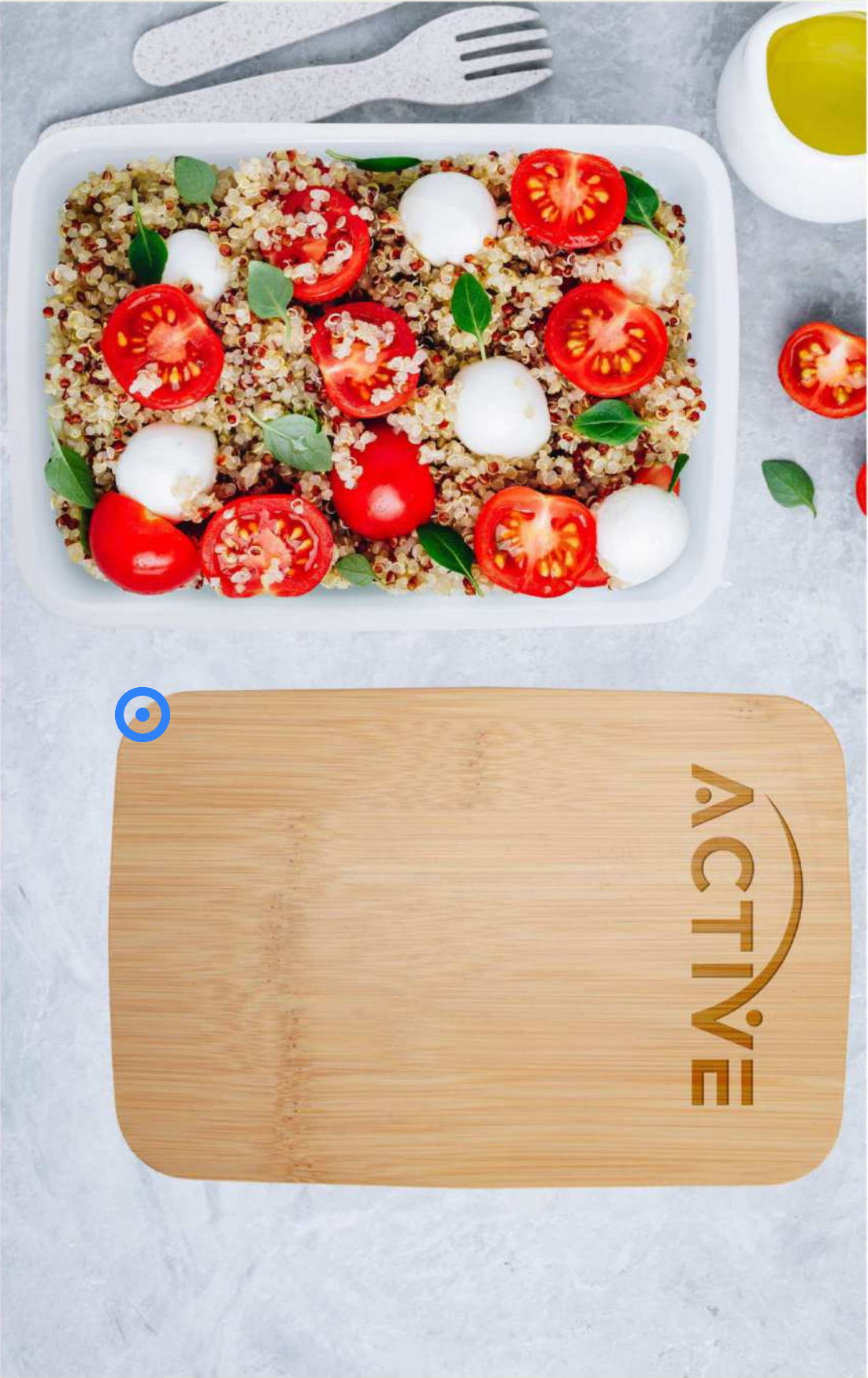
○



The mark of
responsible forestry

**113380 | LEVO BAMBOO BOTTLE OPENER WITH
LEVEL** | Bamboo | 6 x 8 x 1.5 cm | 0.094 kg CO₂e

○



113361 | MANGI 750 ML LUNCH BOX | Recycled Plastic | 19 x 13 x 6 cm | 0.536 kg CO₂e



113369 | MANGI 500 ML LUNCH BOX | Recycled Plastic | 11.2 x 5 x 16.5 cm | 4.889 kg CO₂e





The mark of
responsible forestry

113363 | ROBY 750 ML SALAD BOWL | Borosilicate glass | 1.829 kg CO₂e







originalhome

1 0 0 % E C O D E S I G N

ORIGINAL HOME

Originalhome is not just another interior design & gifts brand. A purpose-driven company designed to create a greener and people friendlier planet.

Products are made from rest and waste materials, using low-impact traditional crafts. We partner with fair trade artisan communities to create more job opportunities in the challenging, rural areas of Indonesia, Bangladesh, India, and Tanzania.



originalhome

100% ECO DESIGN



113406 | ORIGINAL HOME BOTTLE VASE | Recycled glass

UPCYCLED WINE BOTTLES

The drinking glasses and carafes are made from upcycled empty wine bottles, a waste product from the tourism industry of Zanzibar.

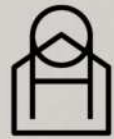
When the transfer buses drop the tourists off at the hotels, the empty buses are filled with empty wine bottles to be dropped at the upcycling project on the way back.

This project prevents this litter from ending up in the sea or landfills and locals becoming more aware of the fact that litter has value.

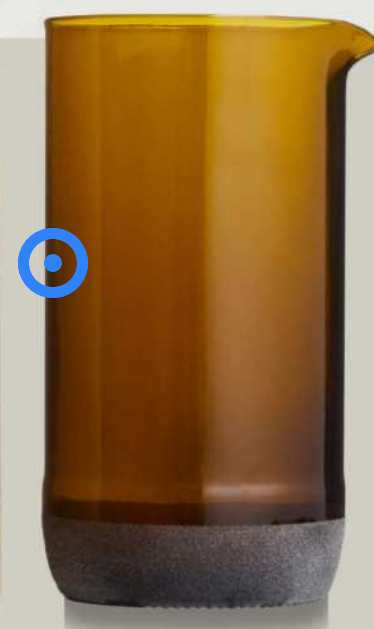


113405 | ORIGINAL HOME GLASS SET | Recycled glass

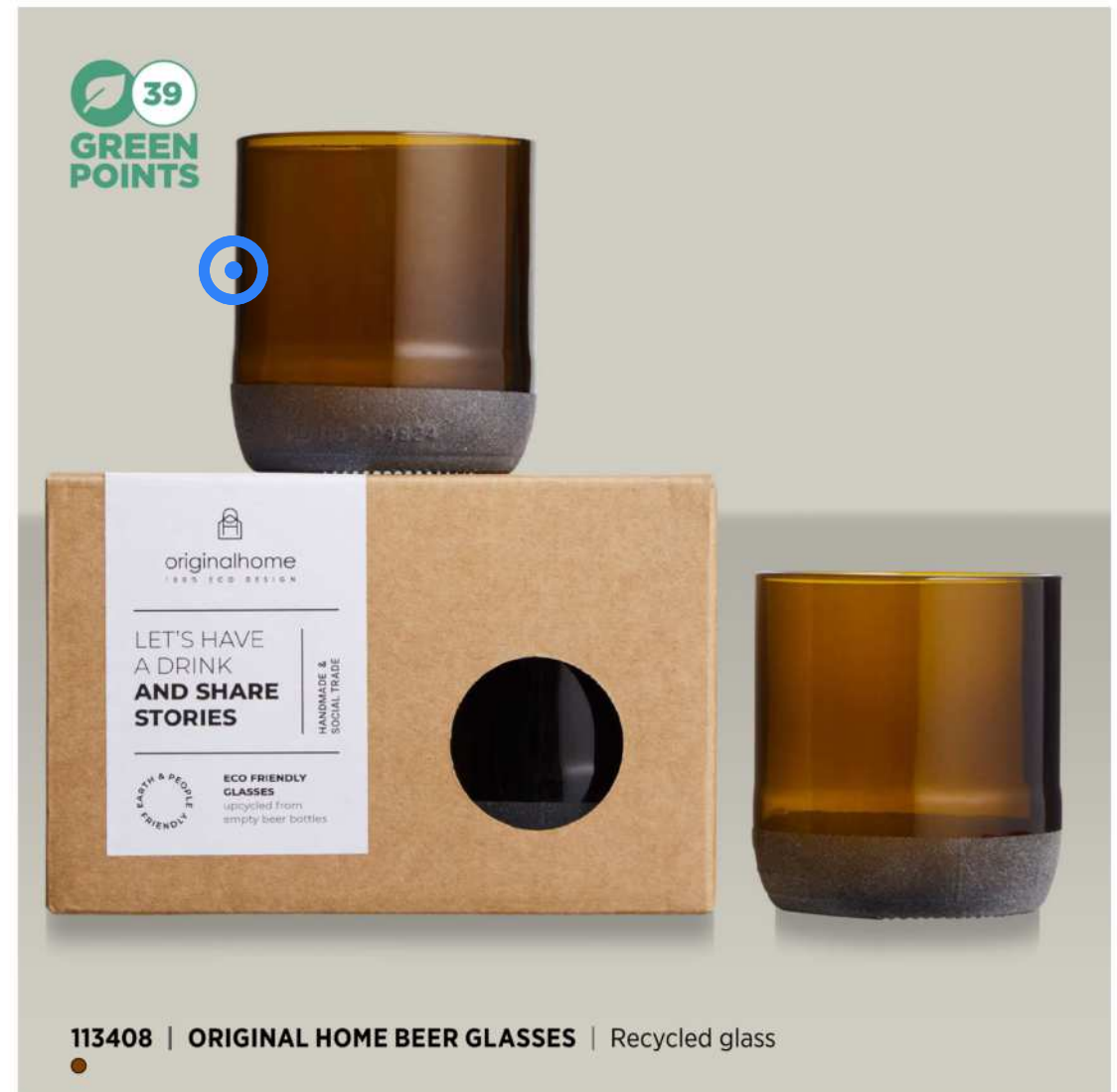




originalhome
100% ECO DESIGN



113407 | ORIGINAL HOME WATER CARAFE | Recycled glass



UPCYCLED BEER BOTTLES

The drinking glasses and carafes are made from upcycled empty beer bottles. A waste product from the hospitality industry of Goa, India, leaving lots of waste around the area, and litter ends up in landfills or nature. Giving a second life to empty beer bottles contributes to waste reduction and cleans up the area.

The specialized trash pickers collect the bottles and are paid a commercial price so that it becomes a profitable activity.

Aside from preventing this litter from ending up in the sea or landfills and helping more people with jobs, this project creates awareness with locals of the fact that litter has value.



113410 | ORIGINAL HOME WOODEN TRAY | Wood



originalhome
100% ECO DESIGN

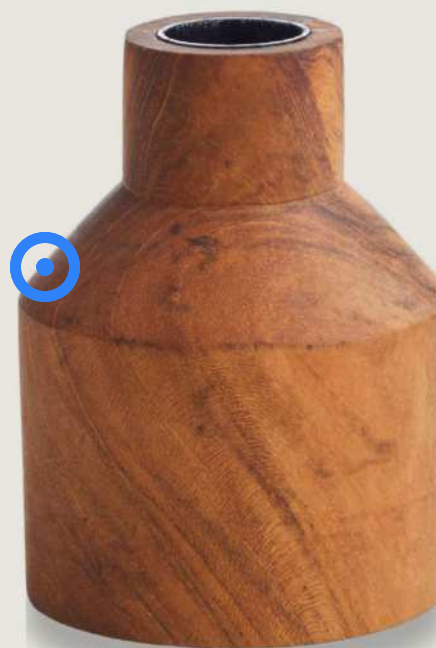
KITCHENWARE

Teak root wood is used as raw material for the kitchenware collection. Teak root is a waste product of the teak plantations of Java, Indonesia. The roots have the same properties as teak wood which is a strong and extremely durable material and usually considered a waste since they need to be unearthed for new plantations. The entire production is executed by hand without any electricity to limit the impact on the environment. Local villagers collect the roots from the plantations and clean them. Craftspeople from the small workshop carve them into differently shaped kitchenware items.



113409 | ORIGINAL HOME CUTTING BOARD | Wood





126326 | ORIGINAL HOME DINNER CANDLE HOLDER - M | Wood

CANDLE HOLDER

Teak root wood is used as raw material. It is a waste product of the teak plantations of Java, Indonesia. The roots have the same properties as teak wood which is a strong and extremely durable material and usually considered a waste since they need to be unearthed for new plantations. The entire production is executed by hand without any electricity to limit the impact on the environment.



originalhome
100% ECO DESIGN

CANDLES

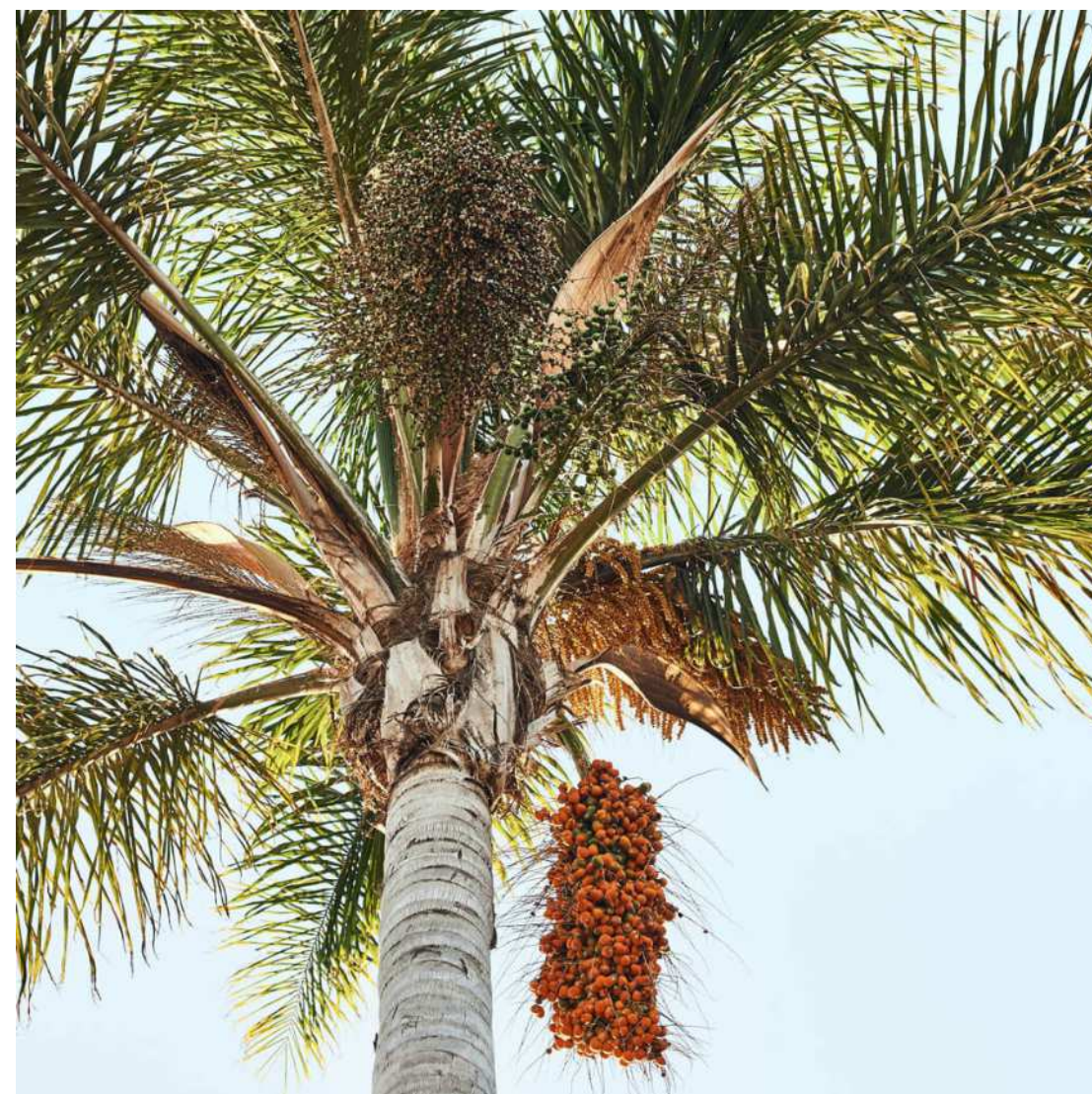
Candles are made from palm kernel wax. They are 100% natural, vegan-approved, unscented, and have a clean burn. This means that these candles emit less CO2 compared to a paraffin candle. Palm kernel wax is the most sustainable wax as it doesn't contain any chemical, synthetic, or animal-based reagents and the palm is a highly efficient crop. The candles are poured by hand in a small factory in Java, Indonesia.



originalhome
100% ECO DESIGN



126323 | ORIGINAL HOME DINNER CANDLE MATCHA | Palm kernel wax





originalhome

100% ECO DESIGN





126324 | ORIGINAL HOME XMAS TREE CANDLE MATCHA - M | Palm kernel wax



CANDLES

Candles are made from palm kernel wax. They are 100% natural, vegan-approved, unscented, and have a clean burn. This means that these candles emit less CO2 compared to a paraffin candle.

Palm kernel wax is the most sustainable wax as it doesn't contain any chemical, synthetic, or animal-based reagents and the palm is a highly efficient crop. The candles are poured by hand in a small factory in Java, Indonesia.



126325 | ORIGINAL HOME XMAS TREE CANDLE MATCHA - L | Palm kernel wax





126322 | WELLMARK HAPPY HOME GIFT BOX | Glass





113328 | DENALI GRS HOODIE BLANKET





CLOTHING



CLOTHING

Selected with care are our new additions to the Elevate collection; The Clyde unisex rugby polo sweatshirt is made from a heavy jersey of 100% organic cotton for comfort, combining a classic design with modern comfort. Or the Evans sherpa fleece made from GRS recycled polyester, with a contrast fabric of 100% GRS recycled nylon. Whether exploring the great outdoors or simply lounging at home, the Evans unisex sherpa fleece promises unparalleled comfort and modern style. Discover our colour additions to Elevate's beanie collection of Irwin and Boreas. Mix and match, the possibilities are endless.



38237 | CLYDE UNISEX RUGBY POLO SWEATSHIRT | GOTS certified organic cotton



39476 | EVANS UNISEX SHERPA FLEECE | GRS certified recycled polyester
 ●●●●●●●●



111043 | IRWIN BEANIE | Acrylic | 19 x 23 cm | 0.167 kg CO₂e





NEW
COLOURS

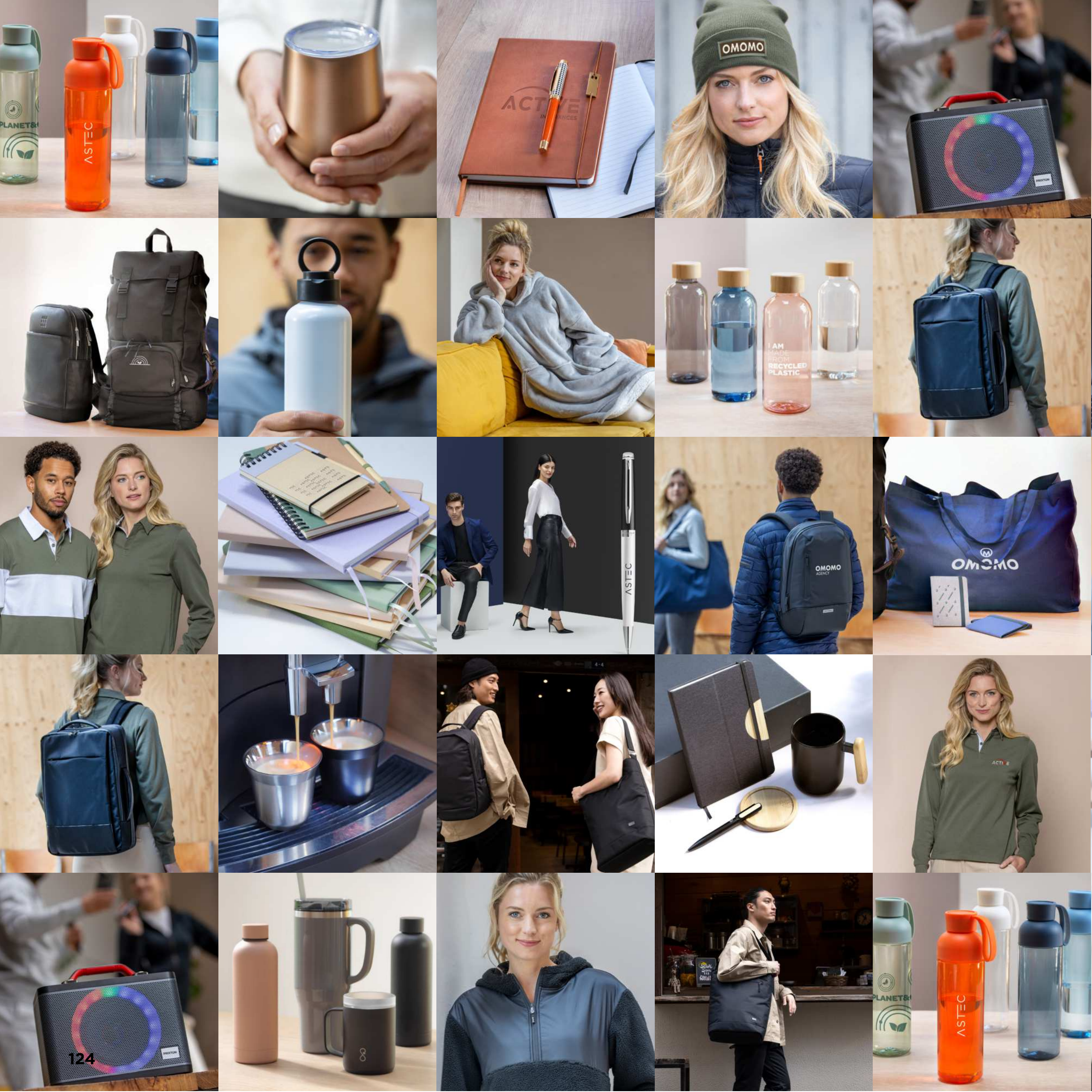


38676 | BOREAS BEANIE WITH PATCH | Acrylic | 19 x 23 cm | 0.154 kg CO₂e



ELEVATE

Learn more >





Disclaimer

- Printing shown on products represent a variety of techniques and positions.
- Other print techniques and positions available.
- Contact us for more information
- Images representing people and activities in this catalogue are for inspiration purposes only. Products without article codes are not for sale. The images and logos, featured on the products are for visual purposes only and may differ from the recommended print technique. Licensed products are reserved for B2B activity only and cannot under any circumstances be offered for retail sale. Only products listed with item number are available.
- Some brands are not available in all regions.
- Printing and typesetting errors reserved. The seller accepts no liability for the consequences of printing and typesetting errors.



THE COMPLETE SOLUTION

PRINT | PROMOTIONAL | DESIGN

Tel: 029 2000 3846

Email: sales@aamedia.co.uk

Web: aamedia.co.uk

 AA Media Print & Media Management